

<b>MODELS:</b>	<b>SA821</b>	<b>SA822</b>	<b>SA823</b>	<b>SA824</b>
----------------	--------------	--------------	--------------	--------------

Thank you for purchasing a Sealey product. Manufactured to a high standard this product will, if used according to these instructions and properly maintained, give you years of trouble free performance.

**IMPORTANT: PLEASE READ THESE INSTRUCTIONS CAREFULLY. NOTE THE SAFE OPERATIONAL REQUIREMENTS, WARNINGS & CAUTIONS. USE THE PRODUCT CORRECTLY AND WITH CARE FOR THE PURPOSE FOR WHICH IT IS INTENDED. FAILURE TO DO SO MAY CAUSE DAMAGE AND/OR PERSONAL INJURY AND WILL INVALIDATE THE WARRANTY. PLEASE KEEP INSTRUCTIONS SAFE FOR FUTURE USE.**

### 1. SAFETY INSTRUCTIONS

- ✓ Familiarise yourself with the application and limitations of the air hose reel, as well as the specific hazards.
- ❑ **WARNING!** Disconnect the air hose reel from the air supply before servicing or performing any maintenance.
- ✓ Maintain the air hose reel in good condition (use an authorised service agent).
- ✓ Replace or repair damaged parts. *Use recommended parts only. Unauthorised parts may be dangerous and will invalidate the warranty.*
- ✓ Locate and fix the air hose reel in a suitable working area, ensure that the correct fixings are used to secure the unit to the wall.
- ✗ **DO NOT** position the hose in direct sun light, or in areas of extreme heat or cold.
- ✗ **DO NOT** mount inside spray booth/oven.
- ✓ Ensure there is adequate lighting.
- ❑ **WARNING!** Ensure maximum air pressure is not exceeded.
- ✓ Keep extended air hose away from heat, oil and sharp edges.
- ✓ Check hose for wear before each use and ensure all connections are secure.
- ✓ Keep the unwound air hose away from wet, damp, oily surfaces.
- ❑ **WARNING!** Always wear approved eye when operating the air hose reel.
- ✓ Maintain correct balance and footing. Ensure the floor is not slippery and wear non-slip shoes.
- ✓ Remove ill fitting clothing. Remove ties, watches, rings, other loose jewellery and contain and/or tie back long hair.
- ✓ Keep children and unauthorised persons away from the working area.
- ✗ **DO NOT** operate the air hose reel if any parts are damaged or missing as this may cause failure and/or personal injury.
- ✗ **DO NOT** exceed the rated capacity of the air hose reel.
- ✗ **DO NOT** use the air hose reel for any purpose other than that for which it is designed.
- ✗ **DO NOT** yank the hose from the air supply.
- ✗ **DO NOT** operate the air hose reel when you are tired or under the influence of alcohol, drugs or intoxicating medication.
- ✗ **DO NOT** direct air from the air hose at yourself or others.
- ✓ When not in use ensure the air supply is turned off and tools disconnected. Disconnect from the air supply and retract the hose into case.
- ❑ **WARNING! DO NOT dismantle the hose reel casing. To do so may result in damage to the appliance and/or personal injury and will invalidate the warranty. Internal maintenance, which will require the opening of the casing, must only be undertaken by an authorised service agent.**

### 2. INTRODUCTION & SPECIFICATIONS

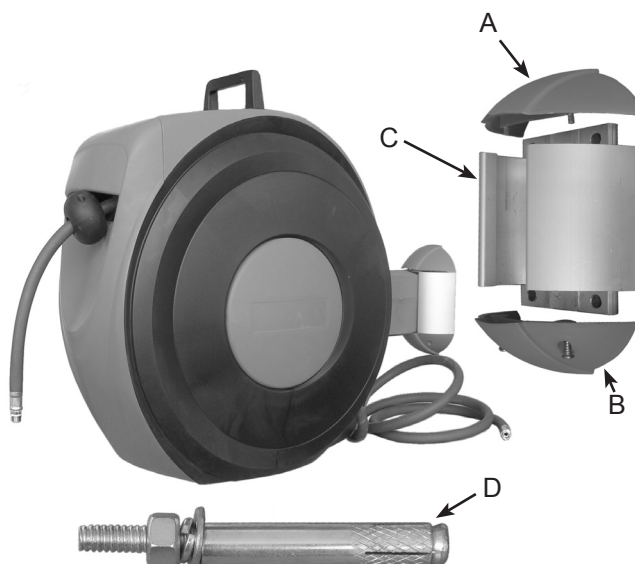
Heavy-duty composite housing with wall mounted aluminium alloy swivel bracket. Fitted with high quality rubber hose. Innovative design features three key points. Hose can be extended and stopped at any length. Controlled, slow rewind which, unlike traditional retractable reels returns the air hose at a safe speed. Auto layering mechanism distributes air hose evenly back into reel housing preventing it from jamming. Suitable for professional garages/workshops.

MODEL NO.	SA821	SA822	SA823	SA824
Hose length	10m	15m	20m	30m
Hose Size ID/OD	10/15mm	10/15mm	10/15mm	10/15mm
Maximum pressure	250psi	250psi	250psi	250psi
Hose type	Rubber	Rubber	Rubber	Rubber
Inlet - Outlet	1/4" BSP	1/4" BSP	1/4" BSP	1/4" BSP

### 3. MOUNTING/ASSEMBLY

❑ **WARNING! Ensure the hose is disconnected from the air supply. Do not position the hose in direct sun light or in areas of extreme heat or cold.**

- 3.1. To wall mount the reel first remove the wall mounting bracket from the reel by pulling off the top bracket cover (A) and sliding the bracket off the hose reel.
  - 3.1.1. Unscrew the two screws retaining the lower bracket cover (B) and remove from bracket (C).
  - 3.1.2. Using the bracket as a template mark the wall where the hose reel is to be mounted and drill four 12mm diameter holes.
  - 3.1.3. Insert the four rawl through bolts (D) into the holes and mount the bracket onto the studs and loosely secure with the flat washers, spring washers and the nuts. Tighten evenly until the bracket is secure.
  - 3.1.4. Slot the lower composite cover into position and secure using the two screws.
  - 3.1.5. Slide the hose reel onto the bracket and replace the top cover.



## 4. OPERATION

### 4.1. Extending the hose.

4.1.1. Pull the hose out slowly to the length required, release the tension and the hose should lock into position, if it starts to retract then pull the hose out slightly further to engage the locking mechanism of the reel.

### 4.2. Retracting the hose.

4.2.1. To release the hose and allow it to automatically rewind, pull the hose out from the locked position and then release the tension on the hose.

**WARNING!** The reel tension is factory set, if any adjustment is required contact an authorised service agent.

## 5. MAINTENANCE & STORAGE

**WARNING! Before attempting maintenance or inspection vent any pressure remaining in the hose.**

To ensure reliable operation, clean the hose and casing regularly. **DO NOT** spray or wet the product, but clean with a damp cloth and warm water. **DO NOT** use solvents or detergents, as these may permanently damage the item.

The hose reel does not require special maintenance as it is lubricated for life. If the product needs to be opened, consult your nearest authorised service agent.

**WARNING: DO NOT attempt to loosen, or remove, any casing screws yourself.**

Replacement of the supply hose should be carried out by skilled personnel only, consult your nearest authorised service agent.

### STORAGE:

Should you wish to store the air hose, ensure it is clean and dry. Place the item in a dark, safe, dry, childproof location, where the temperature will remain reasonably stable.

## 6. DECLARATION OF CONFORMITY

**Declaration of Conformity** We, the sole importer into the UK, declare that the product listed here is in conformity with the following standards and directives.

Auto Rewind Control Air Hose Reels  
Models: SA821, SA822, SA823 & SA824  
93/68/EEC CE Marking Directive



The construction files for this product is held by the manufacturer and may be inspected, by a national authority, upon request to Jack Sealey Ltd.

For Jack Sealey Ltd. Sole importer into the UK of Sealey Power Products.

Signed by Mark Sweetman

12th May 2008

**NOTE:** It is our policy to continually improve products and as such we reserve the right to alter data, specifications and component parts without prior notice.

**IMPORTANT:** No liability is accepted for incorrect use of this equipment.

**WARRANTY:** Guarantee is 12 months from purchase date, proof of which will be required for any claim.

**INFORMATION:** For a copy of our latest catalogue and promotions call us on 01284 757525 and leave your full name and address, including postcode.



Sole UK Distributor  
Sealey Group,  
Bury St. Edmunds, Suffolk.



01284 757500



01284 703534



[www.sealey.co.uk](http://www.sealey.co.uk)



[sales@sealey.co.uk](mailto:sales@sealey.co.uk)