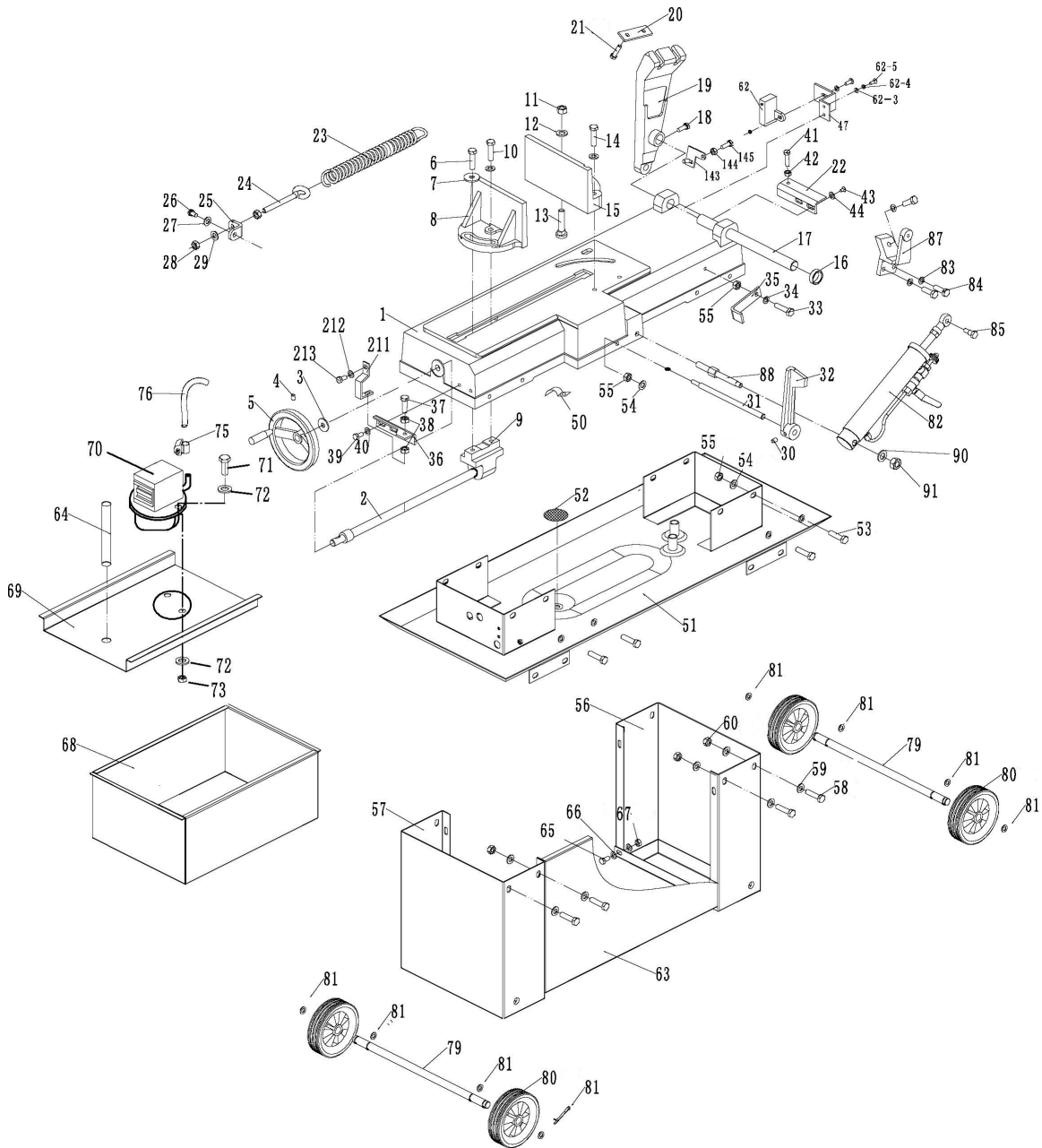




Parts Information:
Bandsaw 300mm Horizontal Hydraulic
Arm
Model No: SM35CE.V4



NOTE: It is our policy to continually improve products and as such we reserve the right to alter data, specifications and component parts without prior notice.

IMPORTANT: No liability is accepted for incorrect use of product.

WARRANTY: Guarantee is 12 months from purchase date, proof of which will be required for any claim.

Sealey Group, Kempson Way, Suffolk Business Park, Bury St Edmunds, Suffolk. IP32 7AR



01284 757500



01284 703534



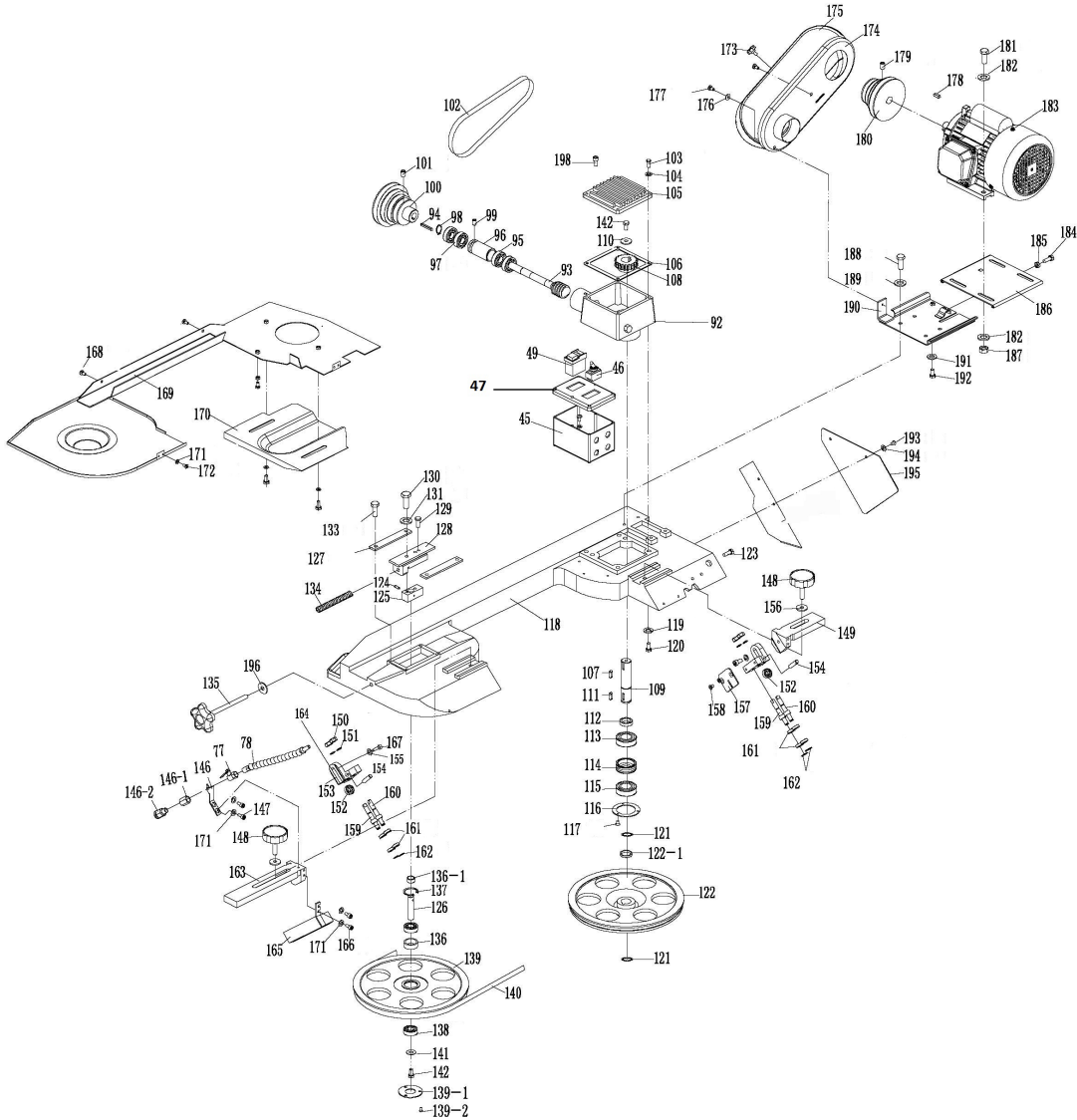
sales@sealey.co.uk



www.sealey.co.uk



Parts Information:
Bandsaw 300mm Horizontal Hydraulic
Arm
Model No: SM35CE.V4



NOTE: It is our policy to continually improve products and as such we reserve the right to alter data, specifications and component parts without prior notice.

IMPORTANT: No liability is accepted for incorrect use of product.

WARRANTY: Guarantee is 12 months from purchase date, proof of which will be required for any claim.

Sealey Group, Kempson Way, Suffolk Business Park, Bury St Edmunds, Suffolk. IP32 7AR



01284 757500



01284 703534



sales@sealey.co.uk



www.sealey.co.uk



Parts Information:
**Bandsaw 300mm Horizontal Hydraulic
Arm**
Model No: SM35CE.V4

Item	Part No.	Description
1	SM35CE.V4-001	TABLE
2	SM35CE.V4-002	SCREW
3	FWM16.S	FLAT WASHER M16 SINGLE
4	GSM812.S	GRUB SCREW M8x12 (SINGLE)
5	SM35CE.V4-005	HAND WHEEL
6	SM35CE.V4-006	HEX SCREW 3/8 x 1-1/4"
7	FWM10.S	FLAT WASHER M10 SINGLE
8	SM35CE.V4-008	VICE JAW BRACKET (FRONT)
9	SM35CE.V4-009	BRACKET
10	SS1040.S	HEX HEAD SET SCREW M10x40mm SINGLE
11	SM35CE.V4-011	HEX NUT 1/2"
12	FWM12.S	FLAT WASHER M12 SINGLE
13	SM35CE.V4-013	CARRIAGE ROLL 1/2 x 2-1/2"
14	SS1050.S	HEX HEAD SET SCREW M10x50mm SINGLE
15	SM35CE.V4-015	VICE JAW BRACKET (REAR)
16	SM35CE.V4-016	BUSHING
17	SM35CE.V4-017	SUPPORT ROD
18	GSM812.S	GRUB SCREW M8x12 (SINGLE)
19	SM35CE.V4-019	PIVOT BRACKET
20	FWM10.S	FLAT WASHER M10 SINGLE
21	SS1030.S	HEX HEAD SET SCREW M10x30mm SINGLE
22	SM35CE.V4-022	SUPPORT PLATE
23	SM35CE.V4-023	SPRING
24	SM35CE.V4-024	SPRING ADJUSTING ROD
25	SM35CE.V4-025	SPRING HANDLE BRACKET
26	SS816.S	HEX HEAD SET SCREW M8x16mm SINGLE
27	FWM8.S	FLAT WASHER M8 SINGLE
28	SN10.S	STEEL NUT M10 ZINC DIN934(SINGLE)
29	FWM10.S	FLAT WASHER M10 SINGLE
30	SS830.S	HEX HEAD SET SCREW M8x30mm SINGLE
31	SM35CE.V4-031	STOCK STOP ROD
32	SM35CE.V4-032	STOP BLOCK
33	SM35CE.V4-033	HEX SCREW 5/16 x 5/8"
34	FWM8.S	FLAT WASHER M8 SINGLE
35	SM35CE.V4-035	SUPPORT PLATE
36	SM35CE.V4-036	SUPPORT PLATE
37	SS1030.S	HEX HEAD SET SCREW M10x30mm SINGLE
38	SN10.S	STEEL NUT M10 ZINC DIN934(SINGLE)

Item	Part No.	Description
39	SS816.S	HEX HEAD SET SCREW M8x16mm SINGLE
40	FWM8.S	FLAT WASHER M8 SINGLE
41	SS835.S	HEX HEAD SET SCREW M8x35mm SINGLE
42	SN8.S	STEEL NUT M8 ZINC DIN934 (SINGLE)
43	SS816.S	HEX HEAD SET SCREW M8x16mm SINGLE
44	FWM8.S	FLAT WASHER M8 SINGLE
45	SM35CE.V4-045	ELECTRICAL BOX
46	SM35CE.V4-046	COOLANT SWITCH (ON/OFF)
47	SM35CE.V4-047	COVER
48	MSP615.S	MACHINE SCREW PAN HEAD PHILLIPS M6x15mm
49	SM35CE.V4-049	MAIN ON/OFF SWITCH (250V-15A)
50	SM35CE.V4-050	WIRE RETAINER
51	SM35CE.V4-051	COOLANT PAN
52	SM35CE.V4-052	FILTER
53	SM35CE.V4-053	HEX SCREW 5/16 x 1-1/4"
54	FWM8.S	FLAT WASHER M8 SINGLE
55	SN8.S	STEEL NUT M8 ZINC DIN934 (SINGLE)
56	SM35CE.V4-056	LEG (RIGHT)
57	SM35CE.V4-057	LEG (LEFT)
58	SS1020.S	HEX HEAD SET SCREW M10x20mm SINGLE
59	FWM10.S	FLAT WASHER M10 SINGLE
60	SN10.S	STEEL NUT M10 ZINC DIN934(SINGLE)
61	SM35CE.V4-061	PULLEY SAFETY SWITCH
62	SM35CE.V4-062	LIMIT SWITCH
62-3	SM35CEV4062-3	SPRING WASHER
62-4	SM35CEV4062-4	WASHER
62-5	SM35CEV4062-5	ROUND HEAD SCREW
62-6	SM35CEV4062-6	HEX NUT
63	SM35CE.V4-063	PANEL
64	SM35CE.V4-064	HOSE
65	SM35CE.V4-065	HEX SCREW 5/16 x 5/8"
66	FWM8.S	FLAT WASHER M8 SINGLE
67	SN8.S	STEEL NUT M8 ZINC DIN934 (SINGLE)
68	SM35CE.V4-068	COOLANT TANK
69	SM35CE.V4-069	PUMP SUPPORT
70	SM35CE.V4-070	COOLING PUMP
--	SM35CEV4.070N	COOLING PUMP (2007 ONWARDS) (NOT SHOWN)

NOTE: It is our policy to continually improve products and as such we reserve the right to alter data, specifications and component parts without prior notice.

IMPORTANT: No liability is accepted for incorrect use of product.

WARRANTY: Guarantee is 12 months from purchase date, proof of which will be required for any claim.

Sealey Group, Kempson Way, Suffolk Business Park, Bury St Edmunds, Suffolk. IP32 7AR



01284 757500



01284 703534



sales@sealey.co.uk



www.sealey.co.uk



Parts Information:
**Bandsaw 300mm Horizontal Hydraulic
Arm**
Model No: SM35CE.V4

Item	Part No.	Description
71	MSP525.S	MACHINE SCREW PAN HEAD PHILLIPS M5x25mm
72	FWM5.S	FLAT WASHER M5 SINGLE
73	SN5.S	STEEL NUT M5 ZINC DIN934 (SINGLE)
74	SM35CE.V4-074	HOSE FITTING 3/8pt
75	SM35CE.V4-075	HOSE CLAMP
76	SM35CE.V4-076	HOSE
77	SM35CE.V4-077	TUBE FITTING 1/4"pt
78	SM35CE.V4-078	FLEXI COOLANT NOZZLE 8"
79	SM35CE.V4-079	WHEEL ROD
80	SM35CE.V4-080	WHEEL, FIXED (124x15x31)
81	SM35CE.V4-081	CUTTER PIN
82	SM35CE.V4-082	CYLINDER
83	FWM8.S	FLAT WASHER M8 SINGLE
84	SM35CE.V4-084	HEX SCREW 5/16 x 1"
85	SM35CE.V4-085	HEX SCREW 3/8 x 1-1/4"
86	SN10.S	STEEL NUT M10 ZINC DIN934(SINGLE)
87	SM35CE.V4-087	CYLINDER BRACKET
88	SM35CE.V4-088	SUPPORT BODY
89	SWM12.S	SPRING WASHER M12 ZINC (SINGLE)
90	FWM12.S	FLAT WASHER M12 SINGLE
91	SN12.S	STEEL NUT M12 ZINC DIN934(SINGLE)
92	SM35CE.V4-092	GEAR BOX
93	SM35CE.V4-093	WORM SHAFT
94	SM35CE.V4-094	KEY 5x5x55
95	B/6003ZZ	BEARING 6003ZZ
96	SM35CE.V4-096	BEARING BUSHING
97	B/6003Z	BEARING 6003Z
98	SM35CE.V4-098	C-RING
99	GSM812.S	GRUB SCREW M8x12 (SINGLE)
100	SM35CE.V4-100	WORM PULLEY
101	GSM812.S	GRUB SCREW M8x12 (SINGLE)
102	V/A24.5	V-BELT (ID-620) A24-1/2

Item	Part No.	Description
103	SM35CE.V4-103	HEX SCREW 1/4 x 5/8"
104	FWM6.S	FLAT WASHER M6 SINGLE
105	SM35CE.V4-105	GEAR BOX COVER (SMALL)
--	SM35CEV4-105L	GEAR BOX COVER (LARGE) (NOT SHOWN)
106	SM35CE.V4-106	GEAR BOX GASKET (SMALL)
--	SM35CEV4-106L	GEAR BOX GASKET (LARGE) (NOT SHOWN)
107	SM35CE.V4-107	KEY 5x5x20
108	SM35CE.V4-108	WORM GEAR
109	SM35CE.V4-109	TRANSMISSION SHAFT
110	SM35CE.V4-110	C-RING
111	SM35CE.V4-111	KEY 5x5x20
112	SM35CE.V4-112	BUSHING
113	B/6003ZZ	BEARING 6003ZZ
114	SM35CE.V4-114	BEARING BUSHING
115	B/6003Z	BEARING 6003Z
116	SM35CE.V4-116	BEARING COVER
117	MSP48.S	MACHINE SCREW PAN HEAD PHILLIPS M4x8mm
118	SM35CE.V4-118	BODY FRAME
119	FWM8.S	FLAT WASHER M8 SINGLE
120	SS840.S	HEX HEAD SET SCREW M8x40mm SINGLE
121	SM35CE.V4-121	C-RING
122	SM35CE.V4-122	BLADE WHEEL (REAR)
122-1	SM35CEV4122-1	ACTIVE SAW WHEEL
123	GSM812.S	GRUB SCREW M8x12 (SINGLE)
124	SM1305.091	PIN 4x25
125	SM35CE.V4-125	SLIDING DRAW BLOCK
126	SM35CE.V4-126	BLADE WHEEL SHAFT (FRONT)
127	SM35CE.V4-127	SLIDING GUIDE PLATE
128	SM35CE.V4-128	BLADE TENSION SLIDING BLOCK
129	SS840.S	HEX HEAD SET SCREW M8x40mm SINGLE
130	SS840.S	HEX HEAD SET SCREW M8x40mm SINGLE

NOTE: It is our policy to continually improve products and as such we reserve the right to alter data, specifications and component parts without prior notice.

IMPORTANT: No liability is accepted for incorrect use of product.

WARRANTY: Guarantee is 12 months from purchase date, proof of which will be required for any claim.

Sealey Group, Kempson Way, Suffolk Business Park, Bury St Edmunds, Suffolk. IP32 7AR



01284 757500



01284 703534



sales@sealey.co.uk



www.sealey.co.uk



Parts Information:
**Bandsaw 300mm Horizontal Hydraulic
 Arm**
Model No: SM35CE.V4

Item	Part No.	Description
131	SWM8.S	SPRING WASHER M8 ZINC (SINGLE)
132	FWM8.S	FLAT WASHER M8 SINGLE
133	SS816.S	HEX HEAD SET SCREW M8x16mm SINGLE
134	SM35CE.V4-134	SPRING
134	SM35CE.V4-135	ADJUSTABLE BLADE KNOB
136	SM35CE.V4-136	BEARING BUSHING
137	SM35CE.V4-137	C-RING
138	B/620ZZ	BEARING 620ZZ
139	SM35CE.V4-139	BLADE WHEEL (FRONT)
139-1	SM35CE.V4-139-1	BEARING CAP
139-2	SM35CE.V4-139-2	HD SCREW
141	SM35CE.V4-141	WASHER
142	SS815.S	HEX HEAD SET SCREW M8x15mm SINGLE
143	SM35CE.V4-143	SWITCH HIP
144	FWM6.S	FLAT WASHER M6 SINGLE
145	SS625.S	HEX HEAD SET SCREW M6x25mm SINGLE
146	SM35CE.V4-146	NOZZLE COCK SUPPORT
146-1	SM35CE.V4-146-1	JOINT
146-2	SM35CE.V4-146-2	WATER PIPE HEAD
147	SM35CE.V4-147	ROUND SCREW 1/4 x 1/2"
148	SM35CE.V4-148	ADJUSTMENT KNOB
149	SM35CE.V4-149	ADJUSTABLE BRACKET (REAR)
150	SM35CE.V4-150	HEX NUT 3/8 VERY FINE THREAD
151	SWM8.S	SPRING WASHER M8 ZINC (SINGLE)
152	B/6000ZZ	BEARING 6000ZZ
153	SM35CE.V4-153	BLADE ADJUSTABLE (REAR)
154	SM35CE.V4-154	BEARING PIN
155	FWM8.S	FLAT WASHER M8 SINGLE
156	SCB830.S	SOCKET CAP BOLT ZINC M8X30
157	SM35CE.V4-157	DEFLECTOR PLATE
158	SM35CE.V4-158	SCREW 1/4 x 1/2"
159	SM35CE.V4-159	BEARING SHAFT
160	SM35CE.V4-160	ECCENTRIC SHAFT
161	B/629ZZ	BEARING 629ZZ
162	SM35CE.V4-162	C-RING

Item	Part No.	Description
163	SM35CE.V4-163	ADJUSTABLE BRACKET (FRONT)
164	SM35CE.V4-164	BLADE ADJUSTABLE (FRONT)
165	SM35CE.V4-165	BLADE COVER (FRONT)
167	SCB830.SB	SOCKET HEAD CAP SCREW M8x30 BLACK
168	MSP510.S	MACHINE SCREW PAN HEAD PHILLIPS M5x10mm
169	SM35CE.V4-169	BLADE BACK COVER
170	SM35CE.V4-170	WHEEL COVER(SO)
172	MSP612.S	MACHINE SCREW PAN HEAD PHILLIPS M6x12mm
173	MSP525.S	MACHINE SCREW PAN HEAD PHILLIPS M5x25mm
174	SM35CE.V4-174	MOTOR PULLEY COVER ASSEMBLY
175	SM35CE.V4-175	PULLEY, BOTTOM COVER
176	FWM6.S	FLAT WASHER M6 SINGLE
177	MSP616.S	MACHINE SCREW PAN HEAD PHILLIPS M6x16mm
178	SM35CE.V4-178	KEY 5x5x40
179	GSM812.S	GRUB SCREW M8x12 (SINGLE)
180	SM35CE.V4-180	MOTOR PULLEY
181	SS825.S	HEX HEAD SET SCREW M8x25mm SINGLE
182	FWM8.S	FLAT WASHER M8 SINGLE
183	SM35CE.V4-183	MOTOR
184	SS835.S	HEX HEAD SET SCREW M8x35mm SINGLE
185	SN8.S	STEEL NUT M8 ZINC DIN934 (SINGLE)
186	SM35CE.V4-186	MOTOR MOUNT PLATE
187	SN8.S	STEEL NUT M8 ZINC DIN934 (SINGLE)
188	SS816.S	HEX HEAD SET SCREW M8x16mm SINGLE
189	FWM8.S	FLAT WASHER M8 SINGLE
190	SM35CE.V4-190	MOTOR MOUNT BRACKET
191	SN8.S	STEEL NUT M8 ZINC DIN934 (SINGLE)
192	SS815.S	HEX HEAD SET SCREW M8x15mm SINGLE
193	MSP612.S	MACHINE SCREW PAN HEAD PHILLIPS M6x12mm (SINGLE)
194	RW619.S	REPAIR WASHER M6x19 (SINGLE)
195	SM35CE.V4-195	SUPPORT PLATE

NOTE: It is our policy to continually improve products and as such we reserve the right to alter data, specifications and component parts without prior notice.

IMPORTANT: No liability is accepted for incorrect use of product.

WARRANTY: Guarantee is 12 months from purchase date, proof of which will be required for any claim.

Sealey Group, Kempson Way, Suffolk Business Park, Bury St Edmunds, Suffolk. IP32 7AR



01284 757500



01284 703534



sales@sealey.co.uk



www.sealey.co.uk