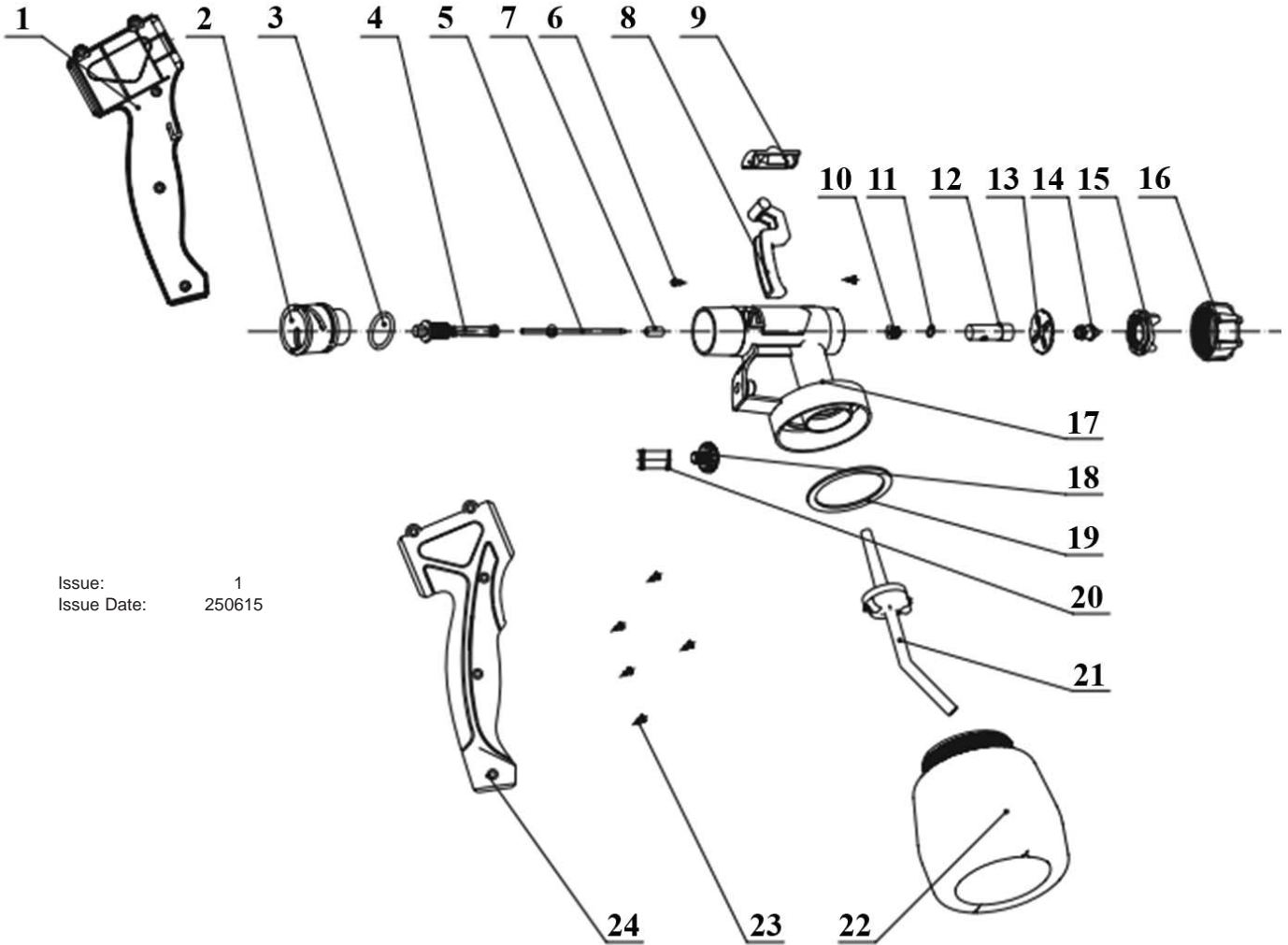


Issue: 1
 Issue Date: 250615

ITEM	PART NO	DESCRIPTION	ITEM	PART NO	DESCRIPTION
1	HVLP3000.01	SCREW (ST2.9x10)	21	HVLP3000.21	SEAL RING
2	HVLP3000.02	FILTER COVER	22	HVLP3000.22	SPLIT PIN
3	HVLP3000.03	FILTER (PACK OF 2)	23	HVLP3000.23	WHEEL
4	HVLP3000.04	CASE, LEFT SIDE	24	HVLP3000.24	WHEEL AXLE
5	HVLP3000.05	SCREW (ST2.9x16)	25	HVLP3000.25	WHEEL BUSHING
6	HVLP3000.06	TELESCOPIC PLUNGER ASS'Y	26	HVLP3000.26	AIR HOSE CONNECTOR
7	HVLP3000.07	SCREW (M4x8)	27	HVLP3000.27	INNER CONNECTOR
8	HVLP3000.08	HANDLE BOTTOM HOUSING	28	HVLP3000.28	SWITCH BUTTON
9	HVLP3000.09	SPRING	29	HVLP3000.29	CAPACITOR 0.22uF
10	HVLP3000.10	PLUNGER LOCK	30	HVLP3000.30	SWITCH
11	HVLP3000.11	HANDLE UPPER HOUSING	31	HVLP3000.31	AUTO TERMINAL
12	HVLP3000.12	AIR HOSE & CONNECTOR	32	HVLP3000.32	INNER TUBE
13	HVLP3000.13	GUN SET	33	HVLP3000.33	SCREW (ST2.9x15)
14	HVLP3000.14	TOP HOUSING	34	HVLP3000.34	CORD GRIP
15	HVLP3000.15	SCREW (ST4x18)	35	HVLP3000.35	CORD PROTECTOR
16	HVLP3000.16	MOTOR COVER (INNER)	36	HVLP3000.36	POWER CORD
17	HVLP3000.17	MOTOR ASS'Y	37	HVLP3000.37	CORD CLAMP
18	HVLP3000.18	MOTOR COVER (OUTER)	38	HVLP3000.38	CORD WINDING KNOB
19	HVLP3000.19	MOTOR SEAL RING	39	HVLP3000.39	CASE, RIGHT SIDE
20	HVLP3000.20	MOTOR SUPPORT	40	HVLP3000.40	FOOT



Issue: 1
 Issue Date: 250615

ITEM	PART NO	DESCRIPTION	ITEM	PART NO	DESCRIPTION
1	HVLP3000G.01	HANDLE, LEFT SIDE	13	HVLP3000G.13	SPRAY NOZZLE HOLDER
2	HVLP3000G.02	AIR OUTLEFT CONNECTOR	14	HVLP3000G.14	SPRAY NOZZLE
3	HVLP3000G.03	SEALING RING	15	HVLP3000G.15	AIR CAP
4	HVLP3000G.04	VALVE SPRING ASS'Y	16	HVLP3000G.16	LOCK NUT
5	HVLP3000G.05	VALVE ASS'Y	17	HVLP3000G.17	GUN BODY
6	HVLP3000G.06	SCREW	18	HVLP3000G.18	LOCKING KNOB
7	HVLP3000G.07	BACK-UP RING	19	HVLP3000G.19	SEAL RING
8	HVLP3000G.08	TRIGGER	20	HVLP3000G.20	SRING (A)
9	HVLP3000G.09	GUN COVER	21	HVLP3000G.21	SUCTION TUBE ASS'Y
10	HVLP3000G.10	LOCK NUT	22	HVLP3000G.22	CONTAINER
11	HVLP3000G.11	SEALING RING	23	HVLP3000G.23	SCREW
12	HVLP3000G.12	VALVE HOLDER ASS'Y	24	HVLP3000G.24	HANDLE, RIGHT SIDE