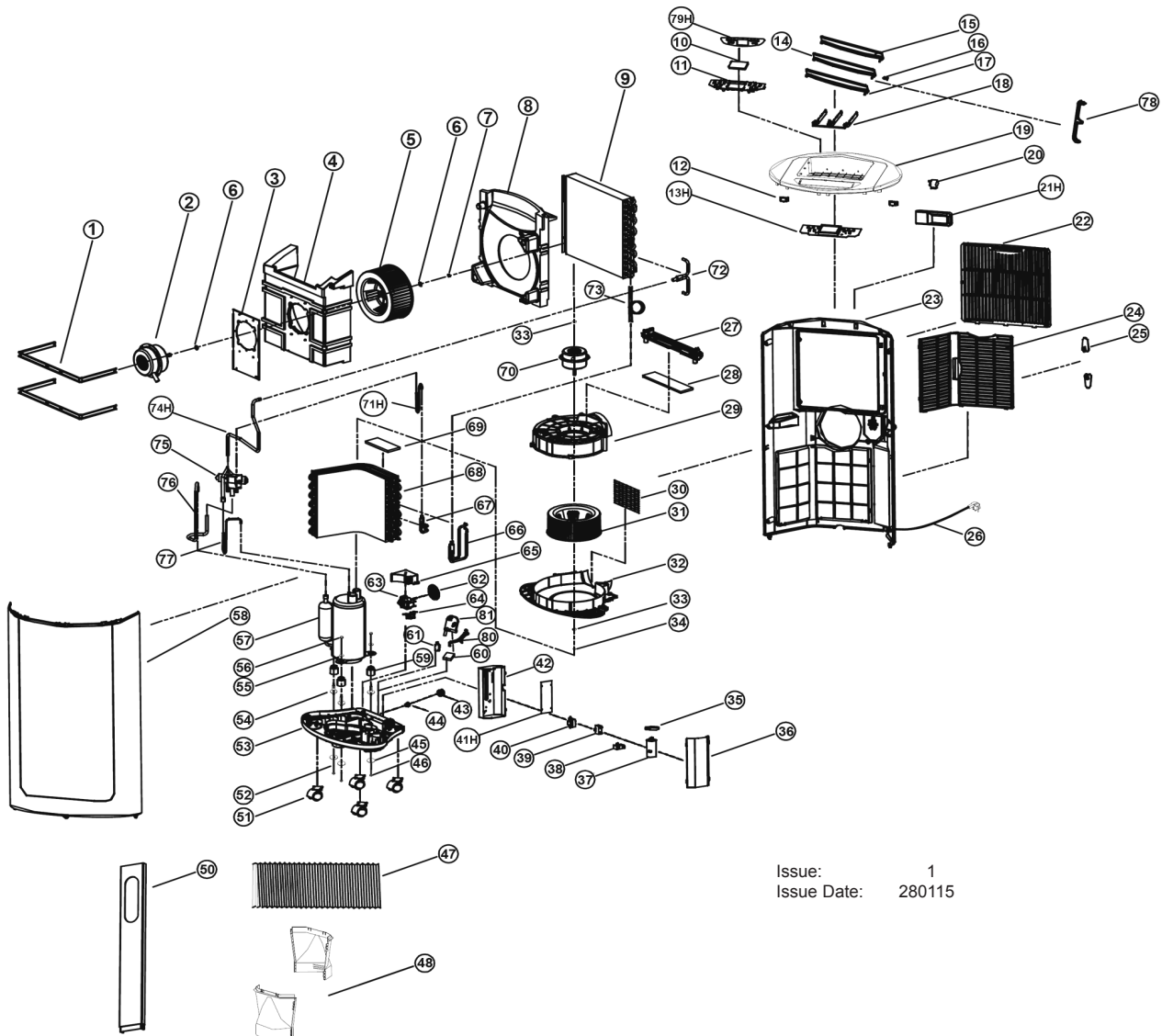




PARTS FOR:  
**AIR CONDITIONER / DEHUMIDIFIER /  
 HEATER 12,000Btu/hr**  
 MODEL: **SAC12000**



Issue: 1  
 Issue Date: 280115

ITEM	PART NO	DESCRIPTION	ITEM	PART NO	DESCRIPTION	ITEM	PART NO	DESCRIPTION
1	SAC12000.01	MOTOR GRIP	28	SAC12000.28	SPONGE FOR WATER TANK	54	SAC12000.54	BOLT
2	SAC12000.02	MOTOR	29	SAC12000.29	FAN COVER, UPPER	55	SAC12000.55	METAL WASHER
3	SAC12000.03	MOTOR BRACKET	30	SAC12000.30	PLATE	56	SAC12000.56	NUT
4	SAC12000.04	FAN COVER, FRONT	31	SAC12000.31	LOWER FAN	57	SAC12000.57	COMPRESSOR
5	SAC12000.05	FAN	32	SAC12000.32	FAN COVER, LOWER	58	SAC12000.58	FRONT PANEL
6	SAC12000.06	METAL WASHER	33	SAC12000.33	METAL WASHER	59	SAC12000.59	COMPRESSOR FEET
7	SAC12000.07	NUT	34	SAC12000.34	NUT	60	SAC12000.60	FLOAT
8	SAC12000.08	FAN COVER, BACK	35	SAC12000.35	INDUCTANCE	61	SAC12000.61	MICROSWITCH
9	SAC12000.09	EVAPORATOR	36	SAC12000.36	ELECTRICAL BOX COVER	62	SAC12000.62	FLYWHEEL FOR PUMP
10	SAC12000.10	DISPLAY SCREEN	37	SAC12000.37	CAPACITOR	63	SAC12000.63	WATER PUMP
11	SAC12000.11	CONTROL PANEL	38	SAC12000.38	LOWER SUPPORT	64	SAC12000.64	MOTOR BRACKET
12	SAC12000.12	STOP BLOCK				65	SAC12000.65	COVER PANEL FOR WATER PUMP
13H	SAC12000.13H	DISPLAY BOARD	39	SAC12000.39	UPPER SUPPORT FOR CAPACITOR	66	SAC12000.66	FILTER & JOINT TUBE
14	SAC12000.14	HORIZONTAL VANE (MIDDLE)	40	SAC12000.40	TRANSFORMER	67	SAC12000.67	EXHAUST DUCT CONNECTOR
15	SAC12000.15	HORIZONTAL VANE (UPPER)	41H	SAC12000.41H	MAIN CONTROL BOARD	68	SAC12000.68	CONDENSOR
16	SAC12000.16	MOTOR SHAFT	42	SAC12000.42	ELECTRICAL BOX	69	SAC12000.69	SPONGE FOR CONDENSOR
17	SAC12000.17	HORIZONTAL VANE (LOWER)	43	SAC12000.43	WATER COVER	70	SAC12000.70	MOTOR (LOWER)
18	SAC12000.18	VANE SUPPORT	44	SAC12000.44	WATER STOP	71	SAC12000.71	PIPE FOR COMPRESSOR (A)
19	SAC12000.19	TOP COVER	45	SAC12000.45	METAL WASHER	72	SAC12000.72	EVAPORATOR CONNECTOR
20	SAC12000.20	STEP MOTOR	46	SAC12000.46	NUT	73	SAC12000.73	CAPILLARY
21H	SAC12000.21H	REMOTE CONTROL	47	SAC12000.47	EXHAUST DUCT	74	SAC12000.74	PIPE FOR COMPRESSOR (B)
22	SAC12000.22	FILTER GRILLE	48	SAC12000.48	EXHAUST DUCT CONNECTOR	75	SAC12000.75	VALVE (4-WAY)
23	SAC12000.23	BACK PANEL	50	SAC12000.50	SIDE PANEL	76	SAC12000.76	PIPE FOR COMPRESSOR (C)
24	SAC12000.24	FILTER	51	SAC12000.51	CASTOR WHEEL	77	SAC12000.77	PIPE FOR COMPRESSOR (D)
25	SAC12000.25	PLUG	52	SAC12000.52	SPRING WASHER			
26	SAC12000.26	POWER CORD	53	SAC12000.53	BASE			
27	SAC12000.27	WATER PLATE						

**NOTE:** It is our policy to continually improve products and as such we reserve the right to alter data, specifications and component parts without prior notice.

**IMPORTANT:** No liability is accepted for incorrect use of product.

**WARRANTY:** Guarantee is 12 months from purchase date, proof of which will be required for any claim.

**INFORMATION:** For a copy of our latest catalogue and promotions call us on 01284 757525 and leave your full name and address, including postcode.



Sole UK Distributor,  
 Sealey Group, Kempson Way,  
 Suffolk Business Park,  
 Bury St Edmunds, Suffolk, IP32 7AR



01284 757500



01284 703534



[www.sealey.co.uk](http://www.sealey.co.uk)



[sales@sealey.co.uk](mailto:sales@sealey.co.uk)