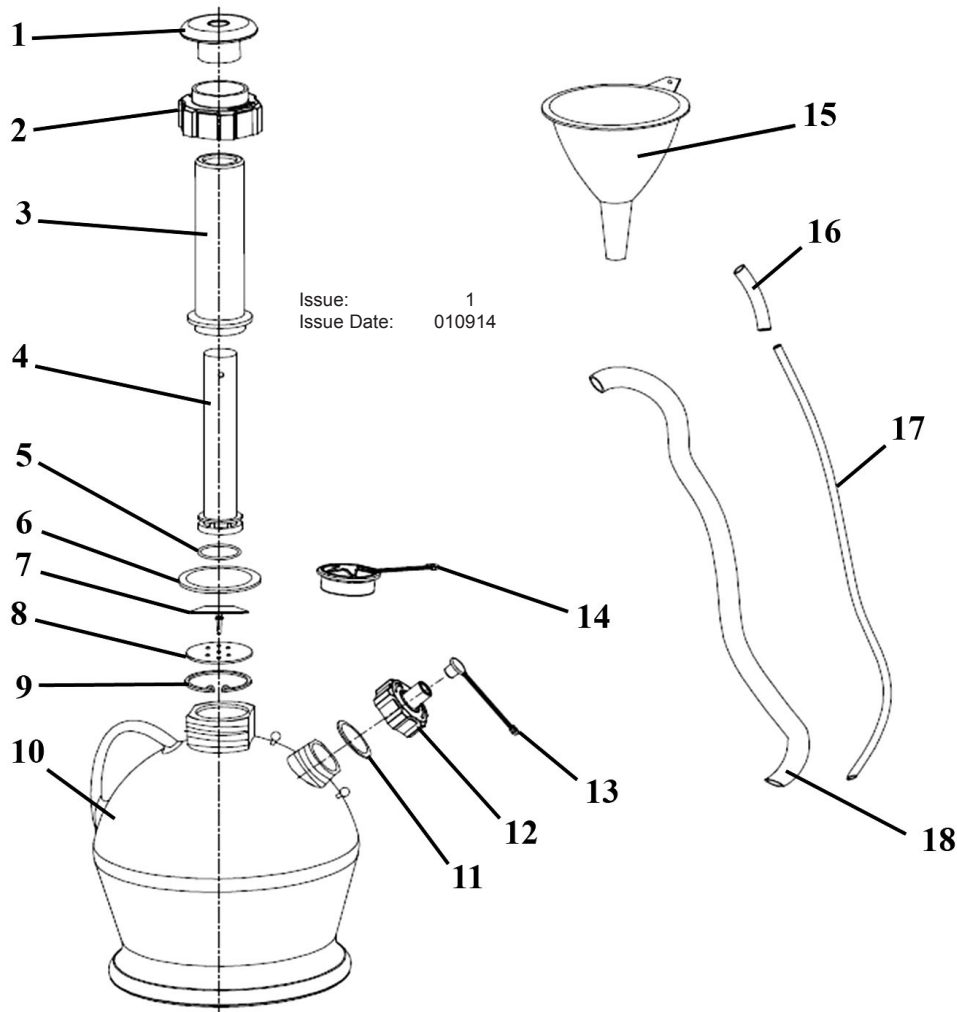




PARTS FOR:
VACUUM OIL & EXTRACTOR MANUAL 4ltr
 MODEL: **MS156**



ITEM	PART NO	DESCRIPTION	ITEM	PART NO	DESCRIPTION
1	MS156.01	PUMP HANDLE	10	MS156.10	TANK (4ltr)
2	MS156.02	TOP CAP	11	MS156.11	SEAL RING
3	MS156.03	PUMP TUBE (OUTTER)	12	MS156.12	CAP (SMALL)
4	MS156.04	PUMP TUBE (INNER)	13	MS156.13	LID PLUG (SMALL)
5	MS156.05	SEAL RING	14	MS156.14	COVER
6	MS156.06	SEAL RING	15	MS156.15	FUNNEL
7	MS156.07	DAMPER	16	MS156.16	HOSE SHORT (10dia)
8	MS156.08	DAMPER PLATE	17	MS156.17	HOSE (8 dia)
9	MS156.09	CIRCLIP	18	MS156.18	HOSE (10 dia)

NOTE: It is our policy to continually improve products and as such we reserve the right to alter data, specifications and component parts without prior notice.

IMPORTANT: No liability is accepted for incorrect use of product.

WARRANTY: Guarantee is 12 months from purchase date, proof of which will be required for any claim.

INFORMATION: For a copy of our latest catalogue and promotions call us on 01284 757525 and leave your full name and address, including postcode.



Sole UK Distributor,
 Sealey Group, Kempson Way,
 Suffolk Business Park,
 Bury St Edmunds, Suffolk, IP32 7AR



01284 757500



01284 703534



www.sealey.co.uk



sales@sealey.co.uk