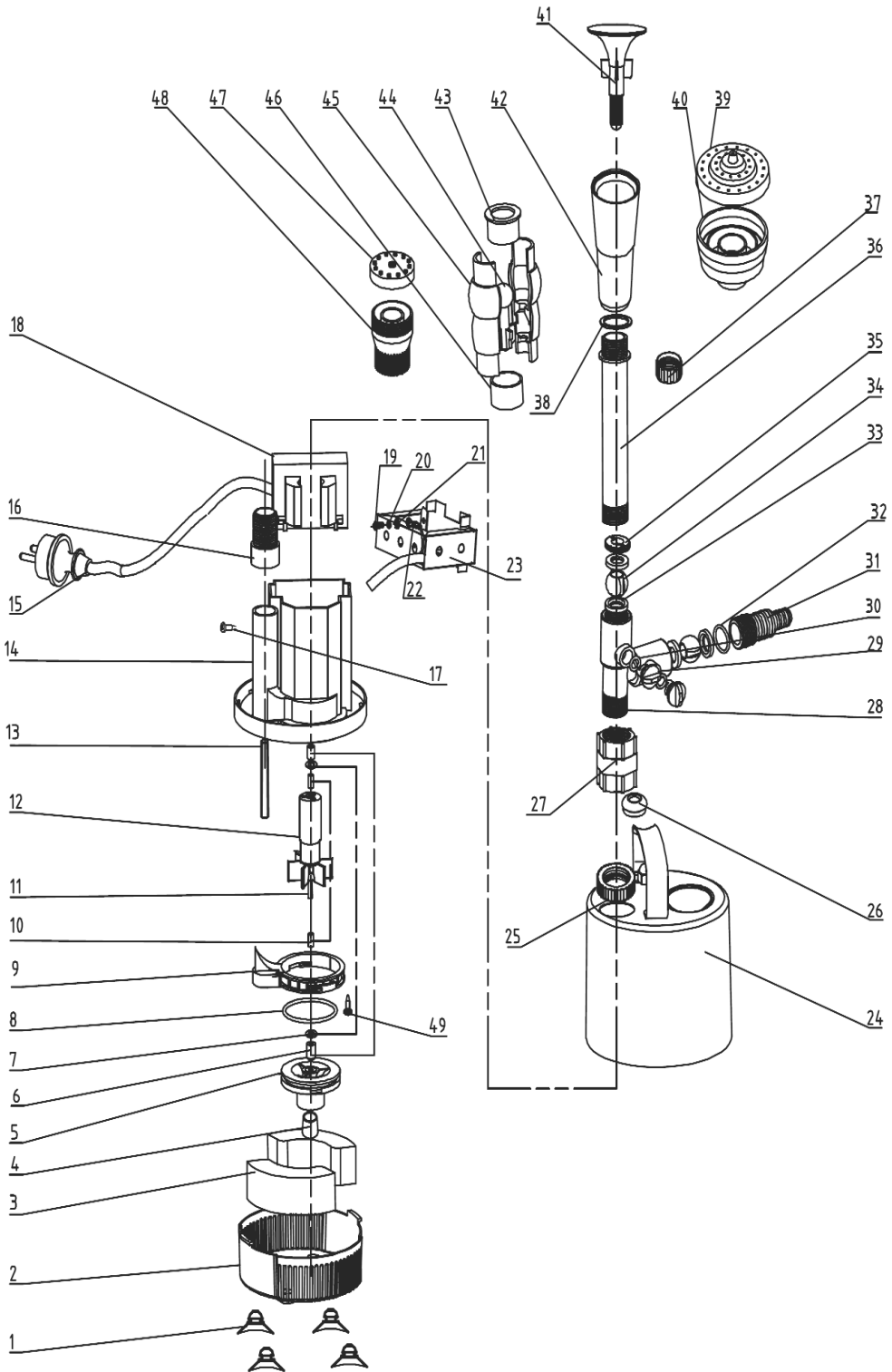




PARTS FOR :  
**SUBMERSIBLE POND PUMP STAINLESS STEEL**  
**1750LTR/HR 230V**  
MODEL : WPP1750S



ISSUE : 1  
ISSUE DATE : 09/01/14

**NOTE:** It is our policy to continually improve products and as such we reserve the right to alter data, specifications and component parts without prior notice.

**IMPORTANT:** No liability is accepted for incorrect use of product.

**WARRANTY:** Guarantee is 12 months from purchase date, proof of which will be required for any claim.

**INFORMATION:** For a copy of our latest catalogue and promotions call us on 01284 757525 and leave your full name and address, including postcode.



Sole UK Distributor,  
Sealey Group, Kempson Way,  
Suffolk Business Park,  
Bury St Edmunds, Suffolk, IP32 7AR



01284 757500



01284 703534



[www.sealey.co.uk](http://www.sealey.co.uk)



[sales@sealey.co.uk](mailto:sales@sealey.co.uk)



PARTS FOR :  
**SUBMERSIBLE POND PUMP STAINLESS STEEL**  
**1750LTR/HR 230V**  
**MODEL : WPP1750S**

PAGE 2 OF 2

ITEM	PART NO	DESCRIPTION
1	WP10701600	SUCTION PLATE
2	WP01901606	FILTER BASE
3	WP01901607	PLASTIC FILTER
4	WP04102613	BUSHING
5	WP00901602	IMPELLER COVER
6	WP04304630	AXIS CAP
7	WP03804600	WASHER
8	WP05101636	O-RING
9	WP04304605	IMPELLER LINING BLOCK
10	WP04306602	SHAFT SLEEVE
11	WP02350606	SHAFT
12	WP02349613	ROTOR
13	WP05401602	SUPPORT
14	WP00409607	MAIN BODY
15	WPP1750S.15	CABLE PLUG
16	WP02717601	THREADED SCREW
17	WP07802609	FLAT HEAD SCREW
18	WP02221035	STATOR
19	WP818B	SCREW (M3x8)
20	WP933	SPRING WASHER
21	WP86223	TOOTH WASHER
22	WP04102602	PLASTIC PLUG
23	WP02420601	ALUMINIUM HOUSING
24	WP01015604	HOUSING (STAINLESS STEEL)
25	WP02905600	CONNECTION NUT
26	WP05201603	CABLE BUSHING
27	WP02905601	COUPLING NUT
28	WP07501600	VALVE BODY (3-WAY)
29	WP06401600	KNOB
30	WP05180008	O-RING
31	WP02717600	CONNECTOR BODY
32	WP05101635	O-RING
33	WP03201600	SEALING WASHER
34	WP01504600	BALL CORE
35	WP12201600	SEAL
36	WP13002603	OUTPUT TUBE
37	WP04304600	NOZZLE THREAD KNOB
38	WP03202604	SEALING GASKET
39	WP12302601	NOZZLE
40	WP12402601	SPRAY BODY
41	WP12301601	NOZZLE
42	WP12401601	SPRAY BODY
43	WP04304602	SPRAY NOZZLE SET (UPPER)
44	WP12403601	NOZZLE CORE
45	WP12403600	NOZZLE BODY
46	WP04304603	SHOWER NOZZLE SET (LOWER)
47	WP12302603	NOZZLE
48	WP12402603	SPRAY BODY
49	WP528285	SELF-TAPPING SCREW

ISSUE : 1  
ISSUE DATE : 09/01/14

**NOTE:** It is our policy to continually improve products and as such we reserve the right to alter data, specifications and component parts without prior notice.

**IMPORTANT:** No liability is accepted for incorrect use of product.

**WARRANTY:** Guarantee is 12 months from purchase date, proof of which will be required for any claim.

**INFORMATION:** For a copy of our latest catalogue and promotions call us on 01284 757525 and leave your full name and address, including postcode.



Sole UK Distributor,  
Sealey Group, Kempson Way,  
Suffolk Business Park,  
Bury St Edmunds, Suffolk, IP32 7AR



01284 757500



01284 703534



[www.sealey.co.uk](http://www.sealey.co.uk)



[sales@sealey.co.uk](mailto:sales@sealey.co.uk)