

Issue: 1
 Issue Date: 170413

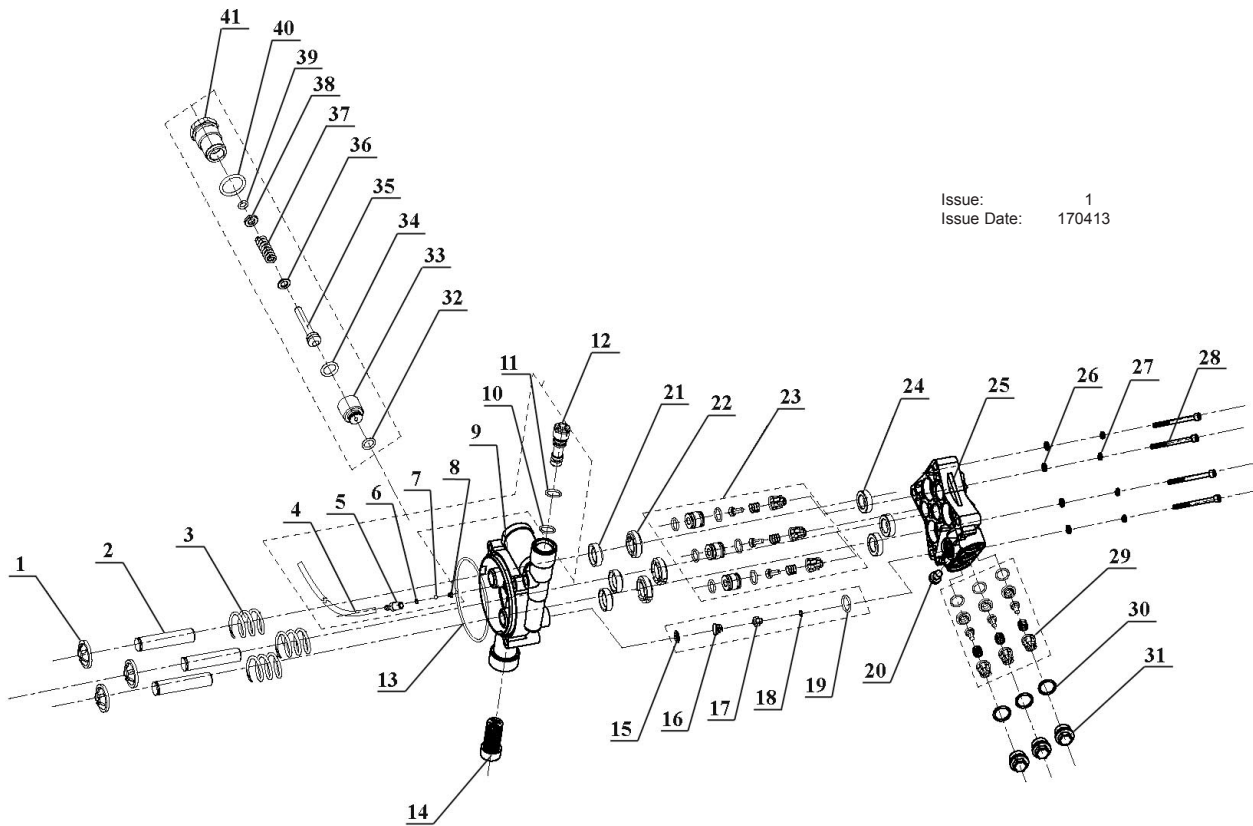
ITEM	PART NO	DESCRIPTION	ITEM	PART NO	DESCRIPTION
1	PW2500.01	WATER INLET SCREW	47	PW2500.47	DETERGENT TANK
2	PW2500.02	SWITCH KNOB	48	PW2500.48	POWER CABLE PROTECTOR
3	PW2500.03	SWITCH COVER	49	PW2500.49	POWER CABLE GRIP
4	PW2500.04	WATER INLET COVER	50	PW2500.50	SPRAYER FILTER
5	PW2500.05	FRONT HOUSING	51	PW2500.51	SPRAYER SPIGOT
6	PW2500.06	SCREW (ST2.9x13)	52	PW2500.52	DETERGENT TANK CAP
7	PW2500.07	WIRE SEAL	53	PW2500.53	DETERGENT TANK TUBE
8	PW2500.08	SCREW (ST4x14)	54	PW2500.54	DETERGENT TUBE (INNER)
9	PW2500.09	SWITCH BOX, FRONT	55	PW2500.55	PRESSURE GUN HOLDER
10	PW2500.10	PRESSURE GUN HOLDER	56	PW2500.56	SCREW (ST4.8x20)
11	PW2500.11	SWITCH LEVER	58	PW2500.58	DETERGENT TUBE CONNECTION
12	PW2500.12	SWITCH	59	PW2500.59	SCREW (ST4.8x25)
13	PW2500.13	SCREW (M5x18)	60	PW2500.60	HOSE REEL SUPPORT, RIGHT
14	PW2500.14	PUMP BASE	61	PW2500.61	HOSE REEL SUPPORT, LEFT
15	PW2500.15	WATER SHUTTER	62	PW2500.62	HANDLE
16	PW2500.16	SWICH BOX, REAR	63	PW2500.63	HIGH PRESSURE HOSE (INNER)
17	PW2500.17	CAPACITOR COVER	64	PW2500.64	HOSE REEL HANDLE GRIP
18	PW2500.18	CAPACITOR	65	PW2500.65	SCREW (ST4.8x16)
19	PW2500.19	CAPACITOR PROTECTOR	66	PW2500.66	HOSE REEL HANDLE
20	PW2500.20	WHEEL TRIM, LEFT	67	PW2500.67	HOSE REEL
21	PW2500.21	WHEEL TRIM, RIGHT	68	PW2500.68	U-PIN
22	PW2500.22	CONNECTION BASE	69	PW2500.69	HIGH PRESSURE HOSE CONNECTION
23	PW2500.23	BACK HOUSING	70	PW2500.70	O-RING (4.8x1.8)
24	PW2500.24	BEARING	71	PW2500.71	REEL ADAPTOR (A)
25	PW2500.25	WASHER	73	PW2500.73	REEL ADAPTOR (B)
26	PW2500.26	RETAINING RING	74	PW2500.74	HANDLE COVER
27	PW2500.27	WHEEL	75	PW2500.75	DAMPING RING
28	PW2500.28	WHEEL COVER	76	PW2500.76	WASHER
32	PW2500.32	PRESSURE GUN	77	PW2500.77	SPRING WASHER
34	PW2500.34	HIGH PRESSURE HOSE	78	PW2500.78	SCREW (M4x8)
35	PW2500.35	WARNING LABEL	79	PW2500.79	PUMP/MOTOR CLIP
36	PW2500.36	POWER CORD	80	PW2500.80	CAP FOR MOTOR
43	PW2500.43	LANCE	81	PW2500.81	SCREW (ST3x12)
46	PW2500.46	RATING LABEL		PW2500.P	MOTOR/PUMP ASSEMBLY

NOTE: It is our policy to continually improve products and as such we reserve the right to alter data, specifications and component parts without prior notice.

IMPORTANT: No liability is accepted for incorrect use of product.

WARRANTY: Guarantee is 12 months from purchase date, proof of which will be required for any claim.

INFORMATION: For a copy of our latest catalogue and promotions call us on 01284 757525 and leave your full name and address, including postcode.



Issue: 1
 Issue Date: 170413

ITEM	PART NO	DESCRIPTION
	PW2500.KIT1	OUTFLOW VALVE KIT
32	PW2500.P32	O-RING (9x1.8)
33	PW2500.P33	VALVE COVER
34	PW2500.P34	O-RING (12x2)
35	PW2500.P35	VALVE CORE
36	PW2500.P36	STOP RING
37	PW2500.P37	SPRING
38	PW2500.P38	WASHER
39	PW2500.P39	O-RING (5.6x1.8)
40	PW2500.P40	O-RING (19x2.65)
41	PW2500.P41	PLASTIC NUT
	PW2500.KIT2	PISTON KIT
1	PW2500.P01	SPRING BASE
2	PW2500.P02	PISTON
3	PW2500.P03	PISTON SPRING
4	PW2500.P04	WATER PIPE
5	PW2500.P05	WATER FILTER
6	PW2500.P06	O-RING (4x1.5)
7	PW2500.P07	STEEL BALL (5mm)
8	PW2500.P08	SPRING
9	PW2500.P09	CYLINDER BLOCK
10	PW2500.P10	O-RING (6.25x2.1)
11	PW2500.P11	O-RING (8.4x1.8)
12	PW2500.P12	VALVE
13	PW2500.P13	O-RING (70x2)
14	PW2500.P14	FILTER

ITEM	PART NO	DESCRIPTION
	PW2500.KIT3	VALVE KIT
15	PW2500.P15	SPRING SUPPORT
16	PW2500.P16	CORE SPRING
17	PW2500.P17	VALVE CORE
18	PW2500.P18	O-RING (2.7x1.9)
19	PW2500.P19	O-RING (9.5x2.5)
20	PW2500.P20	SCREW (M6x6)
21	PW2500.P21	OIL SEAL (21x12x20)
22	PW2500.P22	BACK-STOP BRACKET
	PW2500.KIT4	WATER OUTLET VALVE KIT
29	PW2500.P30	O-RING (14x1.8)
30	PW2500.P31	VALVE NUT
	PW2500.KIT5	WATER INLET VALVE KIT
23	PW2500.P24	Y-SEAL (24x12x20)
24	PW2500.P25	PUMP HEAD
25	PW2500.P26	WASHER (6mm)
26	PW2500.P27	WASHER (6mm)
27	PW2500.P28	SCREW (M6x70)

NOTE: It is our policy to continually improve products and as such we reserve the right to alter data, specifications and component parts without prior notice.
IMPORTANT: No liability is accepted for incorrect use of product.
WARRANTY: Guarantee is 12 months from purchase date, proof of which will be required for any claim.
INFORMATION: For a copy of our latest catalogue and promotions call us on 01284 757525 and leave your full name and address, including postcode.