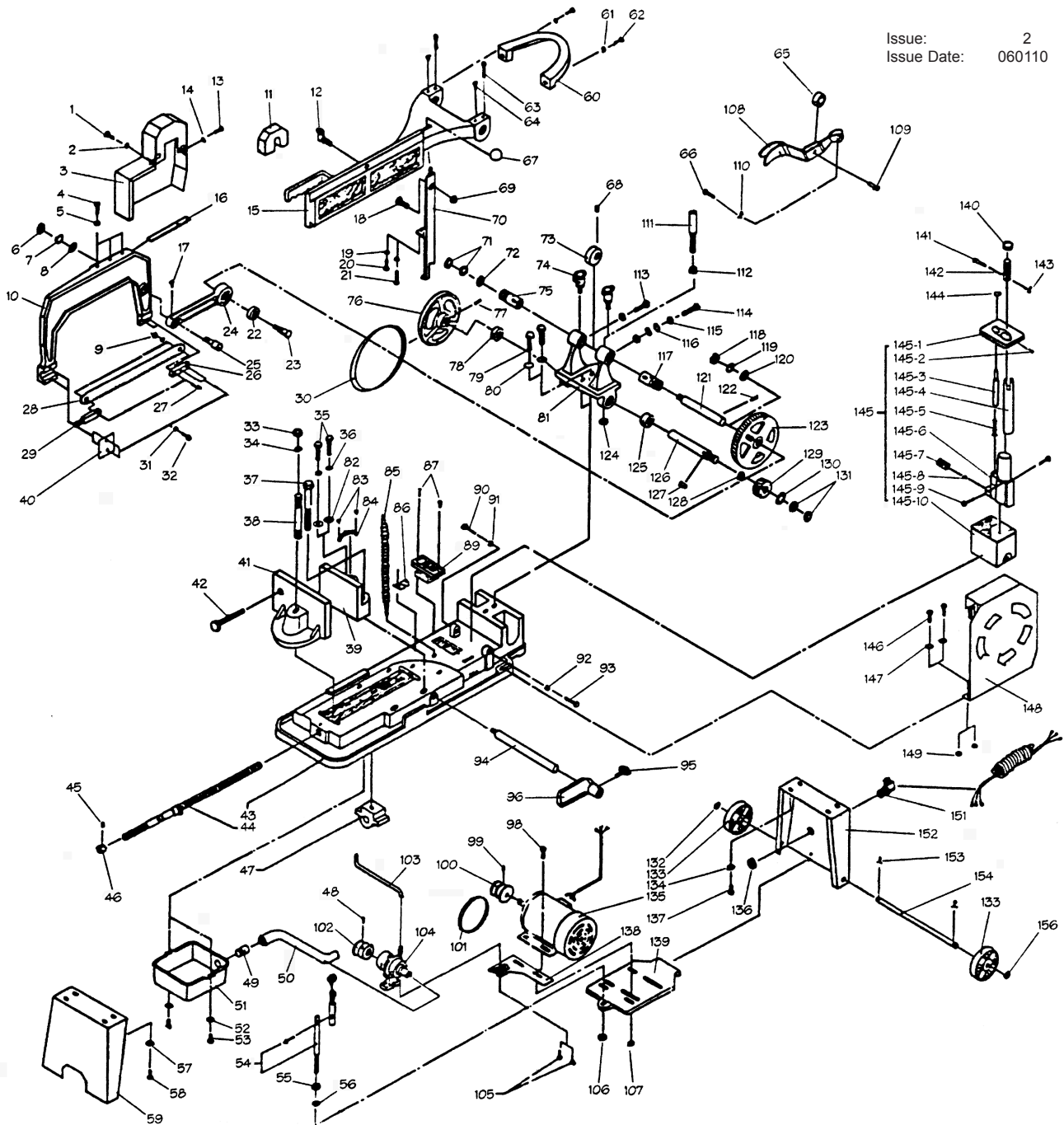


Issue: 2
 Issue Date: 060110



NOTE: It is our policy to continually improve products and as such we reserve the right to alter data, specifications and component parts without prior notice.

IMPORTANT: No liability is accepted for incorrect use of product.

WARRANTY: Guarantee is 12 months from purchase date, proof of which will be required for any claim.

INFORMATION: For a copy of our latest catalogue and promotions call us on 01284 757525 and leave your full name and address, including postcode.



PARTS FOR:
**POWER HACKSAW 185mm CAPACITY c/w
 COOLANT SYSTEM**
 MODEL: **SM17/1**

2 OF 2

ITEM	PART NO	DESCRIPTION	ITEM	PART NO	DESCRIPTION
1	SM16-17R/0001	BOLT	82	SM16-17R/0082	WASHER
2	SM16-17R/0002	WASHER	83	SM16-17R/0083	RIVET
3	SM16-17R/0003	GUARD	84	SM16-17R/0084	DIAPHRAGM
4	SM16-17R/0004	BOLT 1/4"x1-1/4"	85	SM16-17R/0085	WATER NOZZLE
5	SM16-17R/0005	NUT 1/4"	86	SM16-17R/0086	NEEDLE
6	SM16-17R/0006	NUT	87	SM16-17R/0087	BOLT 3/16"x3/4"
7	SM16-17R/0007	WASHER	89	SM16-17R/0089	SWITCH
8	SM16-17R/0008	WASHER	90	SM16-17R/0090	BOLT 5/16"x1-1/2"
9	SM16-17R/0009	NUT 1/4"	91	SM16-17R/0091	NUT 5/16"
10	SM16-17R/0010	BOW SAW	92	SM16-17R/0092	NUT 5/16"
11	SM16-17R/0011	WEIGHT	93	SM16-17R/0093	BOLT 5/16"x1-1/2"
12	SM16-17R/0012	L-TYPE OIL CUP	94	SM16-17R/0094	LENGTH BAR
13	SM16-17R/0013	BOLT	95	SM16-17R/0095	"T" HEAD BOLT
14	SM16-17R/0014	WASHER	96	SM16-17R/0096	LENGTH FIXING PLATE
15	SM16-17R/0015	SAW ARM	98	SM16-17R/0098	BOLT 5/16"x3/4"
16	SM16-17R/0016	SLIDE	99	SM16-17R/0099	HEADLESS SET SCREW 5/16"x3/8"
17	SM16-17R/0017	PEANUT OIL CAP	100	SM16-17R/0100	PULLEY
18	SM16-17R/0018	BOLT	101	SM16-17R/0101	V-BELT 'M16'
19	SM16-17R/0019	NUT 1/4"	102	SM16-17R/0102	PUMP PULLEY
20	SM16-17R/0021	BOLT 1/4"x1-1/4"	103	SM16-17R/0103	HOSE
22	SM16-17R/0022	BEARING '6203ZZ'	104	SM16-17R/0104	COOLANT PUMP
23	SM16-17R/0023	LINK SCREW	105	SM16-17R/0105	BOLT 5/16"x3/4"
24	SM16-17R/0024	CONNECTING ROD	106	SM16-17R/0106	NUT 1/2"
25	SM16-17R/0025	LINK SCREW	107	SM16-17R/0107	NUT 5/16"
26	SM16-17R/0026	BLADE FIXED PLATE	108	SM16-17R/0108	COMPRESSING ARM
27	SM16-17R/0027	SCREW	109	SM16-17R/0109	CUP
28	SM16/17/B	POWERSAW BLADE 16x1x.050"14tpi	110	SM16-17R/0110	COTTER PIN 1/16"
	SM16/17/B/10	POWERSAW BLADE 16x1x.050"10tpi (optional)	111	SM16-17R/0111	COMPRESSING BRACKET
	SM16/17/B/18	POWERSAW BLADE 16x1x.050"18tpi (optional)	112	SM16-17R/0112	NUT 1/2"
29	SM16-17R/0029	BLADE ADJUSTING SCREW	113	SM16-17R/0113	BOLT
30	SM16-17R/0030	V-BELT 'A34'	114	SM16-17R/0114	BOLT 3/8"x1-1/2"
31	SM16-17R/0031	WASHER	115	SM16-17R/0115	NUT 3/8"
32	SM16-17R/0032	BOLT	116	SM16-17R/0116	WASHER
33	SM16-17R/0033	NUT	117	SM16-17R/0117	BUSHING
34	SM16-17R/0034	WASHER	118	SM16-17R/0118	NUT 1/2"
35	SM16-17R/0035	BOLT 1/2"x1-1/4"	119	SM16-17R/0119	WASHER
36	SM16-17R/0036	WASHER	120	SM16-17R/0120	PLATE WASHER 1/2"
37	SM16-17R/0037	BOLT 5/8"x3"	121	SM16-17R/0121	GEAR SHAFT
38	SM16-17R/0038	STUD	122	SM16-17R/0122	SPRING PIN
39	SM16-17R/0039	FIXED VICE	123	SM16-17R/0123	GEAR 110T
40	SM16-17R/0040	PLATE	124	SM16-17R/0124	NUT 1/2"
41	SM16-17R/0041	FREE VICE	125	SM16-17R/0125	BEARING '6204Z'
42	SM16-17R/0042	BOLT	126	SM16-17R/0126	SHAFT
43	SM16-17R/0043	BED	127	SM16-17R/0127	KEY 1/4"
44	SM16-17R/0044	LEADING SCREW	128	SM16-17R/0128	SHAFT CASING
45	SM16-17R/0045	SET SCREW	129	SM16-17R/0129	SMALL GEAR 28T
46	SM16-17R/0046	COLLAR STOP	130	SM16-17R/0130	PLATE WASHER 1/2"
47	SM16-17R/0047	SCREW SET	131	SM16-17R/0131	NUT 1/2"
48	SM16-17R/0048	HEADLESS SET SCREW	132	SM16-17R/0132	SPRING WASHER 1/2"
49	SM16-17R/0049	WATER INLET SCREW	133	SM16-17R/0133	WHEEL
50	SM16-17R/0050	HOSE	134	SM16-17R/0134	STAR WASHER 5/16"
51	SM16-17R/0051	TANK	135	SM16-17R/0135	MOTOR
52	SM16-17R/0052	STAR WASHER	136	SM16-17R/0136	NUT
53	SM16-17R/0053	BOLT 5/16"x1/2"	137	SM16-17R/0137	BOLT 5/16"x3/4"
54	SM16-17R/0054	SCREW	138	SM16-17R/0138	MOUNT
55	SM16-17R/0055	NUT 1/2"	139	SM16-17R/0139	MOUNT
56	SM16-17R/0056	STAR WASHER 1/2"	140	SM16-17R/0140	NUT 1/2"
57	SM16-17R/0057	STAR WASHER 5/16"	141	SM16-17R/0141	PIN
58	SM16-17R/0058	BOLT 5/16"x3/4"	142	SM16-17R/0142	BOLT
59	SM16-17R/0059	SUPPORT	143	SM16-17R/0143	COTTER PIN 1/16"
60	SM16-17R/0060	TILE	144	SM16-17R/0144	FLAT WASHER
61	SM16-17R/0061	STAR WASHER 5/16"	145	SM16-17R/0145	HYDRAULIC PUMP
62	SM16-17R/0062	BOLT 5/16"x1"	145-1	SM16-17R/P-1	COVER,TANK
63	SM16-17R/0063	BOLT	145-2	SM16-17R/P-2	SCREW
64	SM16-17R/0064	PEANUT OIL CAP	145-3	SM16-17R/P-3	PISTON
65	SM16-17R/0065	WHEEL ASSY	145-4	SM16-17R/P-4	RAM PISTON
66	SM16-17R/0066	CUP HEAD PIN	145-5	SM16-17R/P-5	SPRING
67	SM16-17R/0067	KNOB	145-6	SM16-17R/P-6	BODY
68	SM16-17R/0068	SCREW	145-7	SM16-17R/P-7	HEADLESS SOCKET SCREW
69	SM16-17R/0069	NUT 1/2"	145-8	SM16-17R/P-8	BALL
70	SM16-17R/0070	SWITCH BAR	145-9	SM16-17R/P-9	NUT
71	SM16-17R/0071	NUT	145-10	SM16-17R/P-10	TANK
72	SM16-17R/0072	PLATE WASHER	146	SM16-17R/0146	BOLT 5/16"x1-1/4"
73	SM16-17R/0073	CAM	147	SM16-17R/0147	STAR WASHER 5/16"
74	SM16-17R/0074	OIL CUP	148	SM16-17R/0148	GUARD
75	SM16-17R/0075	BUSHING	149	SM16-17R/0149	NUT 5/16"
76	SM16-17R/0076	PULLEY	151	SM16-17R/0151	CABLE FIXTURE
77	SM16-17R/0077	SPRING PIN	152	SM16-17R/0152	SUPPORT
78	SM16-17R/0078	BEARING '6204Z'	153	SM16-17R/0153	COTTER PIN 3/32"
79	SM16-17R/0079	BOLT 1/2"x1-1/4"	154	SM16-17R/0154	SHAFT
80	SM16-17R/0080	STAR WASHER 1/2	155	SM16-17R/0155	WASHER
81	SM16-17R/0081	FRAME SUPPORT			

NOTE: It is our policy to continually improve products and as such we reserve the right to alter data, specifications and component parts without prior notice.

IMPORTANT: No liability is accepted for incorrect use of product.

WARRANTY: Guarantee is 12 months from purchase date, proof of which will be required for any claim.

INFORMATION: For a copy of our latest catalogue and promotions call us on 01284 757525 and leave your full name and address, including postcode.



Sole UK Distributor,
 Sealey Group, Kempson Way,
 Suffolk Business Park,
 Bury St Edmunds, Suffolk, IP32 7AR



01284 757500



01284 703534



www.sealey.co.uk



sales@sealey.co.uk