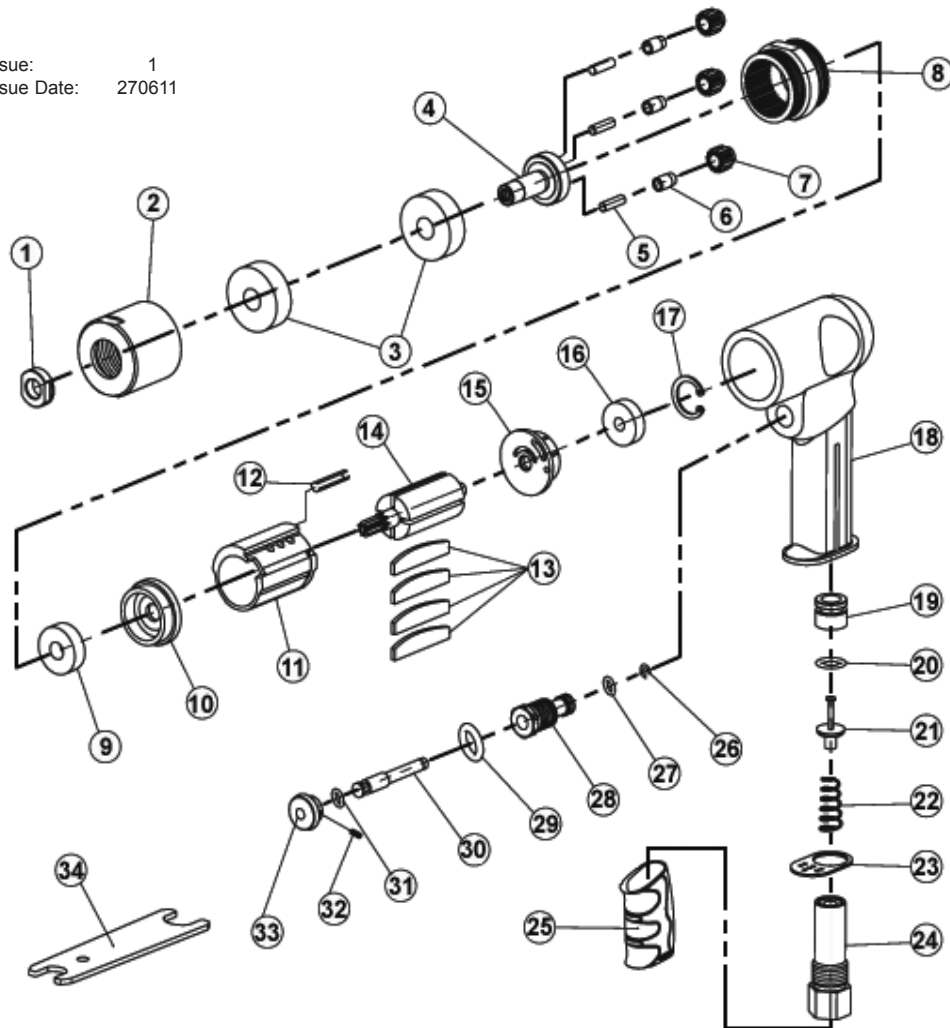


Issue: 1  
 Issue Date: 270611



ITEM	PART NO	DESCRIPTION	ITEM	PART NO	DESCRIPTION
1	GSA722.01	COLLET NUT	18	GSA722.18	HOUSING
2	GSA722.02	COLLET	19	GSA722.19	VALVE STEM SEAT
3	GSA722.03	BEARING	20	GSA722.20	O-RING (1.5x7)
4	GSA722.04	WORK SPINDLE	21	GSA722.21	VALVE STEM
5	GSA722.05	PIN	22	GSA722.22	SPRING
6	GSA722.06	BUSHING	23	GSA722.23	EXHAUST COVER
7	GSA722.07	PLANET GEAR	24	GSA722.24	AIR INLET
8	GSA722.08	INTERNAL GEAR	25	GSA722.25	RUBBER GRIP
9	GSA722.09	BEARING	26	GSA722.26	WASHER
10	GSA722.10	FRONT END PLATE	27	GSA722.27	O-RING (6x1.5)
11	GSA722.11	CYLINDER	28	GSA722.28	VALVE SLEEVE
12	GSA722.12	SPRING PIN (1.5x7)	29	GSA722.29	O-RING (9x2)
13	GSA722.13	ROTOR BLADE	30	GSA722.30	VALVE PIN
14	GSA722.14	ROTOR	31	GSA722.31	O-RING (3.5x1.5)
15	GSA722.15	REAR END PLATE	32	GSA722.32	BOLT (M3x4)
16	GSA722.16	BEARING	33	GSA722.33	TRIGGER
17	GSA722.17	WASHER	34	GSA722.34	HEX WRENCH

**NOTE:** It is our policy to continually improve products and as such we reserve the right to alter data, specifications and component parts without prior notice.

**IMPORTANT:** No liability is accepted for incorrect use of product.

**WARRANTY:** Guarantee is 12 months from purchase date, proof of which will be required for any claim.

**INFORMATION:** For a copy of our latest catalogue and promotions call us on 01284 757525 and leave your full name and address, including postcode.