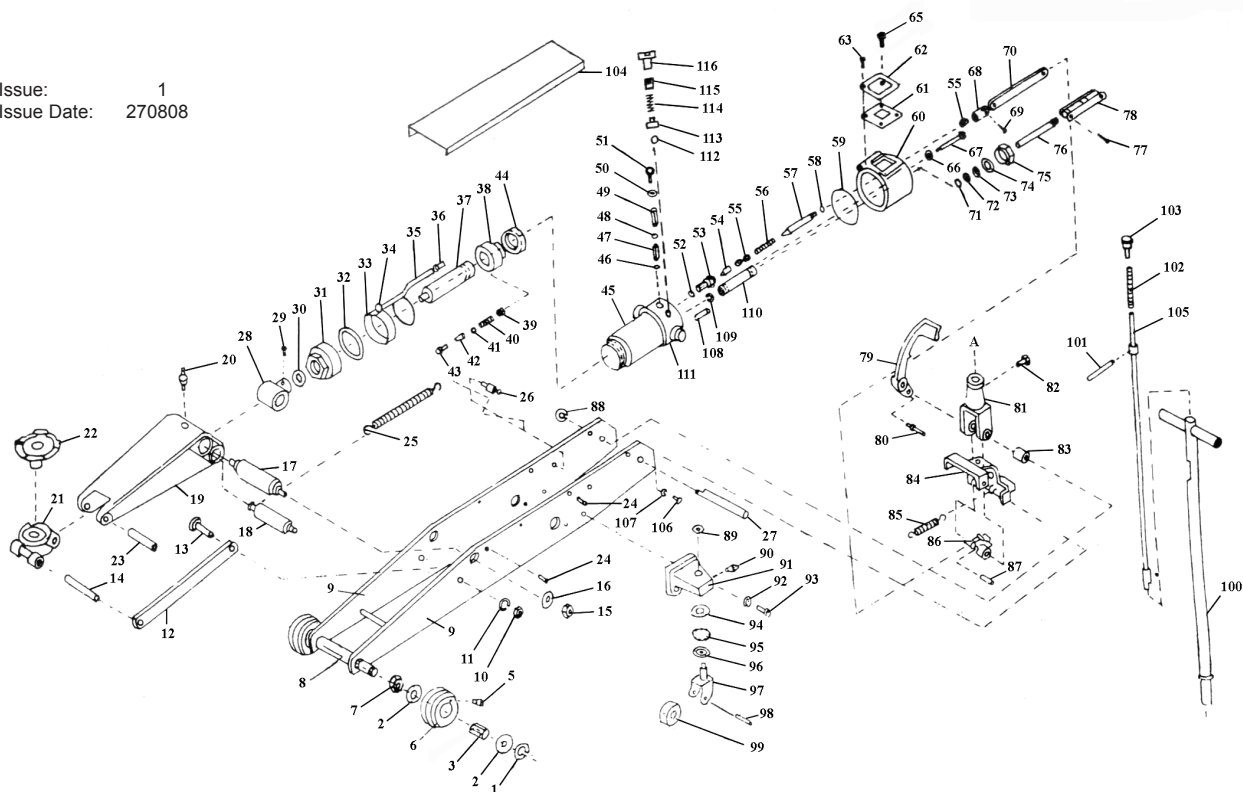


Issue: 1
 Issue Date: 270808



ITEM	PART NO	DESCRIPTION	ITEM	PART NO	DESCRIPTION	ITEM	PART NO	DESCRIPTION
1	5001-01	SNAP RING	40	5001-40	BY-PASS SPRING	79	5001-79	FOOT PEDAL
2	5001-02	WASHER	41	5001-41	STEEL BALL	80	5001-80	FOOT PEDAL PIN
3	5001-03	ROLLER	42	5001-42	BY-PASS ROD	81	5001-81	HANDLE FORK
5	5001-05	GREASE NIPPLE	43	5001-43	BY-PASS VALVE HOUSING	82	5001-82	HANDLE SET SCREW
6	5001-06	FRONT WHEEL	44	5001-44	U-TYPE PACKING	83	5001-83	COLLAR
7	5001-07	NUT	45	5001-45	CYLINDER	84	5001-84	HANDLE FORK BRACKET
8	5001-08	FRONT WHEEL SHAFT	46	5001-46	STEEL BALL	85	5001-85	SPRING
9	5001-09	SIDE FRAME	47	5001-47	SEPARATOR	86	5001-86	CAM STEP
10	5001-10	NUT	48	5001-48	STEEL BALL	87	5001-87	PIN
11	5001-11	SPRING WASHER	49	5001-49	SEPARATOR	88	5001-88	WASHER
12	5001-12	ROD LINK	50	5001-50	COPPER PACKING	89	5001-89	CAP
13	5001-13	ROD LINK PIN	51	5001-51	BOLT	90	5001-90	GREASE NIPPLE
14	5001-14	ROD LINK SPINDLE	52	5001-52	COPPER PACKING	91	5001-91	CASTOR BRACKET
15	5001-15	NUT	53	5001-53	RELEASE VALVE HOUSING	92	5001-92	SPRING WASHER
16	5001-16	WASHER	54	5001-54	RELEASE VALVE	93	5001-93	BOLT
17	5001-17	ARM PIN	55	5001-55	LOCK NUT	94	5001-94	UPPER RING RACE
18	5001-18	PISTON PIN	56	5001-56	SPRING WASHER	95	5001-95	STEEL BALL
19	5001-19	LIFTING ARM	57	5001-57	RELEASE VALVE CONNECTING ROD	96	5001-96	LOWER RING RACE
20	5001-20	GREASE NIPPLE	58	5001-58	O-RING	97	5001-97	CASTOR FORK
21	5001-21	SADDLE BASE	59	5001-59	RUBBER PACKING	98	5001-98	REAR WHEEL SHAFT
22	5001-22	SADDLE	60	5001-60	OIL TANK	99	5001-99	REAR WHEEL
23	5001-23	ARM PIN	61	5001-61	GASKET	100	5001-100	HANDLE
24	5001-24	BOLT	62	5001-62	OIL TANK COVER	101	5001-101	CONTROL LEVER VALVE
25	5001-25	SPRING	63	5001-63	BOLT	102	5001-102	SPRING
26	5001-26	REAR SPRING HANGER	65	5001-65	BOLT	103	5001-103	RELEASE CAP
27	5001-27	HANDLE SHAFT	66	5001-66	FIBRE PACKING	104	5001-104	COVER
28	5001-28	PISTON CONNECTING JOINT	67	5001-67	HANDLE SET SCREW	105	5001-105	VALVE ROD CONTROL
29	5001-29	BOLT	68	5001-68	FORK	106	5001-106	BOLT
30	5001-30	OIL SEAL	69	5001-69	COTTER PIN	107	5001-107	SPRING WASHER
31	5001-31	TANK NUT	70	5001-70	RELEASE VALVE CONNECTING VALVE	108	5001-108	OIL STRAIN
32	5001-32	GASKET	71	5001-71	O-RING	109	5001-109	COPPER RACKING
33	5001-33	RING	72	5001-72	BACK-UP RING	110	5001-110	PUMP CYLINDER
34	5001-34	JOINT	73	5001-73	OIL SEAL	111	5001-111	OIL BOX
35	5001-35	OIL HOSE	74	5001-74	RUBBER PACKING	112	5001-112	STEEL BALL
36	5001-36	CORK PACKING	75	5001-75	LOCK NUT	113	5001-113	RELEASE BAR
37	5001-37	ROD PISTON	76	5001-76	PUMP PLUNGER	114	5001-114	SPRING
38	5001-38	PACKING RETAINER	77	5001-77	PLUNGER PIN CONNECTOR	115	5001-115	SET SCREW
39	5001-39	COPPER PACKING	78	5001-78	CONNECTING BAR	116	5001-116	SCREW

NOTE: It is our policy to continually improve products and as such we reserve the right to alter data, specifications and component parts without prior notice.

IMPORTANT: No liability is accepted for incorrect use of product.

WARRANTY: Guarantee is 12 months from purchase date, proof of which will be required for any claim.

INFORMATION: For a copy of our latest catalogue and promotions call us on 01284 757525 and leave your full name and address, including postcode.