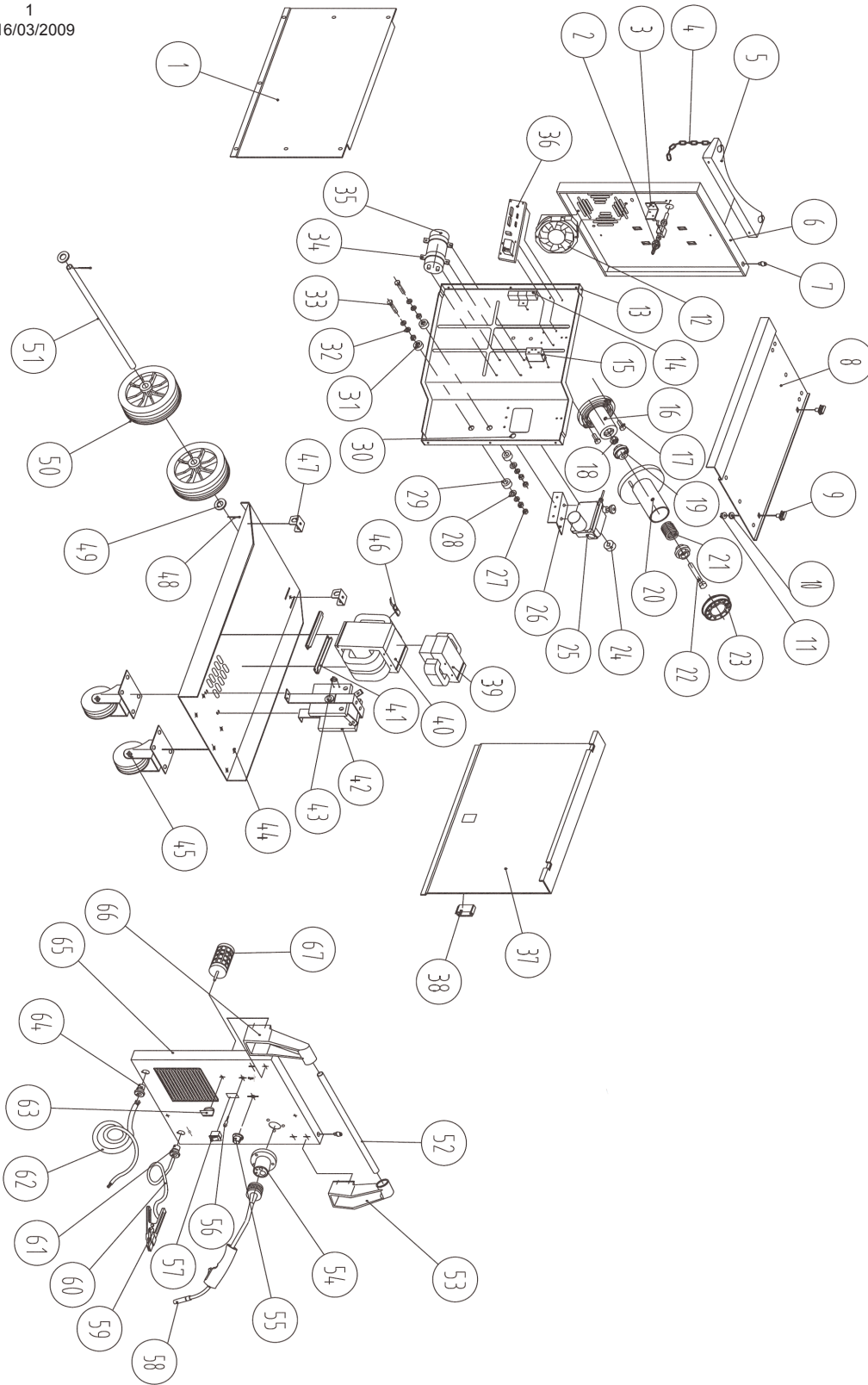


Issue: 1
 Date Issued: 16/03/2009



NOTE: It is our policy to continually improve products and as such we reserve the right to alter data, specifications and component parts without prior notice.

IMPORTANT: No liability is accepted for incorrect use of product.

WARRANTY: Guarantee is 12 months from purchase date, proof of which will be required for any claim.

INFORMATION: For a copy of our latest catalogue and promotions call us on 01284 757525 and leave your full name and address, including postcode.



PARTS LIST FOR:
**PROFESSIONAL GAS/NO GAS MIG
 WELDER 190AMP WITH EURO TORCH**
 MODEL: **MIGHTYMIG190**

Issue: 1
 Date Issued: 16/03/2009

ITEM	PART NO	DESCRIPTION	ITEM	PART NO	DESCRIPTION
1	M/MIG190.01	Side Panel	34	M/MIG190.34	Capacitor Bracket
2	M/MIG190.02	Valve Assembly	35	M/MIG190.35	Capacitor
3	M/MIG190.03	Valve Bracket	36	M/MIG190.36	Wire Feed PCB
4	M/MIG190.04	Chain	37	M/MIG190.37	Access Panel
5	M/MIG190.05	Gas Bottle Support	38	M/MIG190.38	Latch
6	M/MIG190.06	Back Panel	39	M/MIG190.39	Filter Reactor
7	M/MIG190.07	Rubber Support	40	M/MIG190.40	Main Transformer
8	M/MIG190.08	Top Panel	41	M/MIG190.41	Transformer Support
9	M/MIG190.09	Hinge	42	M/MIG190.42	Rectifier Support
10	M/MIG190.10	Rubber Washer	43	M/MIG190.43	Switch
11	M/MIG190.11	Nut, M8	44	M/MIG190.44	Bottom Panel
12	M/MIG190.12	Fan	45	M/MIG190.45	Castor Wheel
13	M/MIG190.13	Inner Panel	46	M/MIG190.46	Thermal Switch
14	M/MIG190.14	Resistance	47	M/MIG190.47	Axle Bracket
15	M/MIG190.15	Relay	48	M/MIG190.48	pin
16	M/MIG190.16	Axle	49	M/MIG190.49	Washer
17	M/MIG190.17	Bolt M8 x 25mm	50	M/MIG190.50	Wheel
18	M/MIG190.18	Nut M10	51	M/MIG190.51	Axle
19	M/MIG190.19	Plastic Knob	52	M/MIG190.52	Handle
20	M/MIG190.20	Spool Holder	53	M/MIG190.53	Handle Support (Right)
21	M/MIG190.21	Spring	54	M/MIG190.54	Toch Holder
22	M/MIG190.22	Bolt, M10x80	55	M/MIG190.55	Speed Control Knob
23	M/MIG190.23	Retainer	56	M/MIG190.56	Overload Indicator Light
24	M/MIG190.24	Wire Feed Roller	57	M/MIG190.57	ON/OFF Switch
25	M/MIG190.25	Wire Feed Motor	58	M/MIG190.58	Welding Torch (MB15)
26	M/MIG190.26	Wire Feeder Support	59	M/MIG190.59	Clamp (Earth)
27	M/MIG190.27	Nut M8	60	M/MIG190.60	Earth Cable
28	M/MIG190.28	Washer	61	M/MIG190.61	Cable Tip
29	M/MIG190.29	Insulating Washer	62	M/MIG190.62	Line Cable
30	M/MIG190.30	Rubber Ring	63	M/MIG190.63	Voltage Control Knob
31	M/MIG190.31	Insulating Washer	64	M/MIG190.64	Cable Tip
32	M/MIG190.32	Washer	65	M/MIG190.65	Front Panel
33	M/MIG190.33	Bolt M8 x 55mm	66	M/MIG190.66	Handle Support (Left)
			67	M/MIG190.67	Voltage Control Switch

NOTE: It is our policy to continually improve products and as such we reserve the right to alter data, specifications and component parts without prior notice.
IMPORTANT: No liability is accepted for incorrect use of product.
WARRANTY: Guarantee is 12 months from purchase date, proof of which will be required for any claim.
INFORMATION: For a copy of our latest catalogue and promotions call us on 01284 757525 and leave your full name and address, including postcode.

	Sole UK Distributor Sealey Group, Bury St. Edmunds, Suffolk.	01284 757500 01284 703534	www.sealey.co.uk sales@sealey.co.uk
--	--	--	--