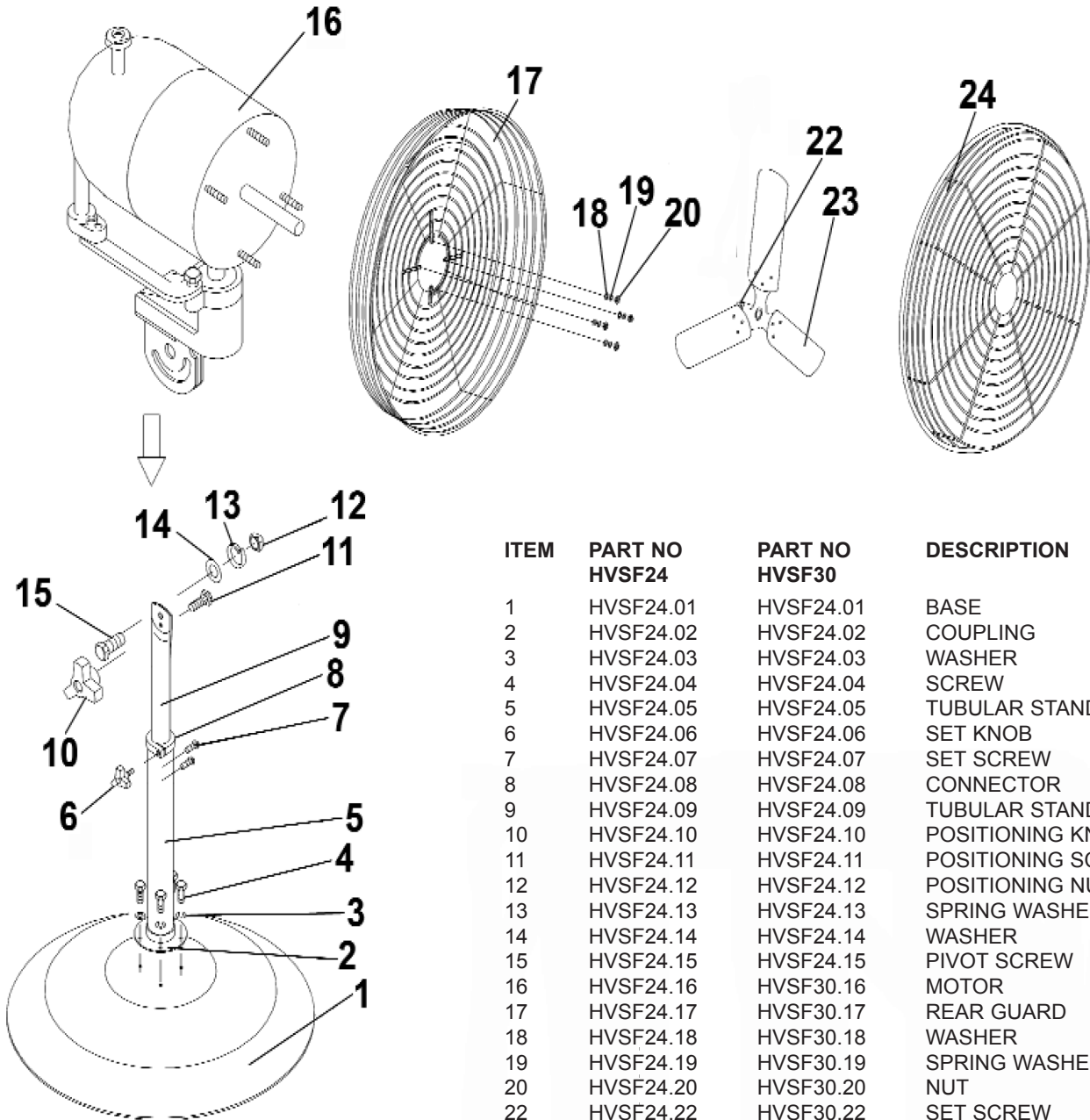


Issue: 2
 Issue Date: 200907



| ITEM | PART NO HVSF24 | PART NO HVSF30 | DESCRIPTION |
|------|-------------------|-------------------|-----------------------|
| 1 | HVSF24.01 | HVSF24.01 | BASE |
| 2 | HVSF24.02 | HVSF24.02 | COUPLING |
| 3 | HVSF24.03 | HVSF24.03 | WASHER |
| 4 | HVSF24.04 | HVSF24.04 | SCREW |
| 5 | HVSF24.05 | HVSF24.05 | TUBULAR STAND (OUTER) |
| 6 | HVSF24.06 | HVSF24.06 | SET KNOB |
| 7 | HVSF24.07 | HVSF24.07 | SET SCREW |
| 8 | HVSF24.08 | HVSF24.08 | CONNECTOR |
| 9 | HVSF24.09 | HVSF24.09 | TUBULAR STAND (INNER) |
| 10 | HVSF24.10 | HVSF24.10 | POSITIONING KNOB |
| 11 | HVSF24.11 | HVSF24.11 | POSITIONING SCREW |
| 12 | HVSF24.12 | HVSF24.12 | POSITIONING NUT |
| 13 | HVSF24.13 | HVSF24.13 | SPRING WASHER |
| 14 | HVSF24.14 | HVSF24.14 | WASHER |
| 15 | HVSF24.15 | HVSF24.15 | PIVOT SCREW |
| 16 | HVSF24.16 | HVSF30.16 | MOTOR |
| 17 | HVSF24.17 | HVSF30.17 | REAR GUARD |
| 18 | HVSF24.18 | HVSF30.18 | WASHER |
| 19 | HVSF24.19 | HVSF30.19 | SPRING WASHER |
| 20 | HVSF24.20 | HVSF30.20 | NUT |
| 22 | HVSF24.22 | HVSF30.22 | SET SCREW |
| 23 | HVSF24.23 | HVSF30.23 | BLADE (1 SET) |
| 24 | HVSF24.24 | HVSF30.24 | FRONT GUARD |

NOTE: It is our policy to continually improve products and as such we reserve the right to alter data, specifications and component parts without prior notice.

IMPORTANT: No liability is accepted for incorrect use of product.

WARRANTY: Guarantee is 12 months from purchase date, proof of which will be required for any claim.

INFORMATION: For a copy of our latest catalogue and promotions call us on 01284 757525 and leave your full name and address, including postcode.