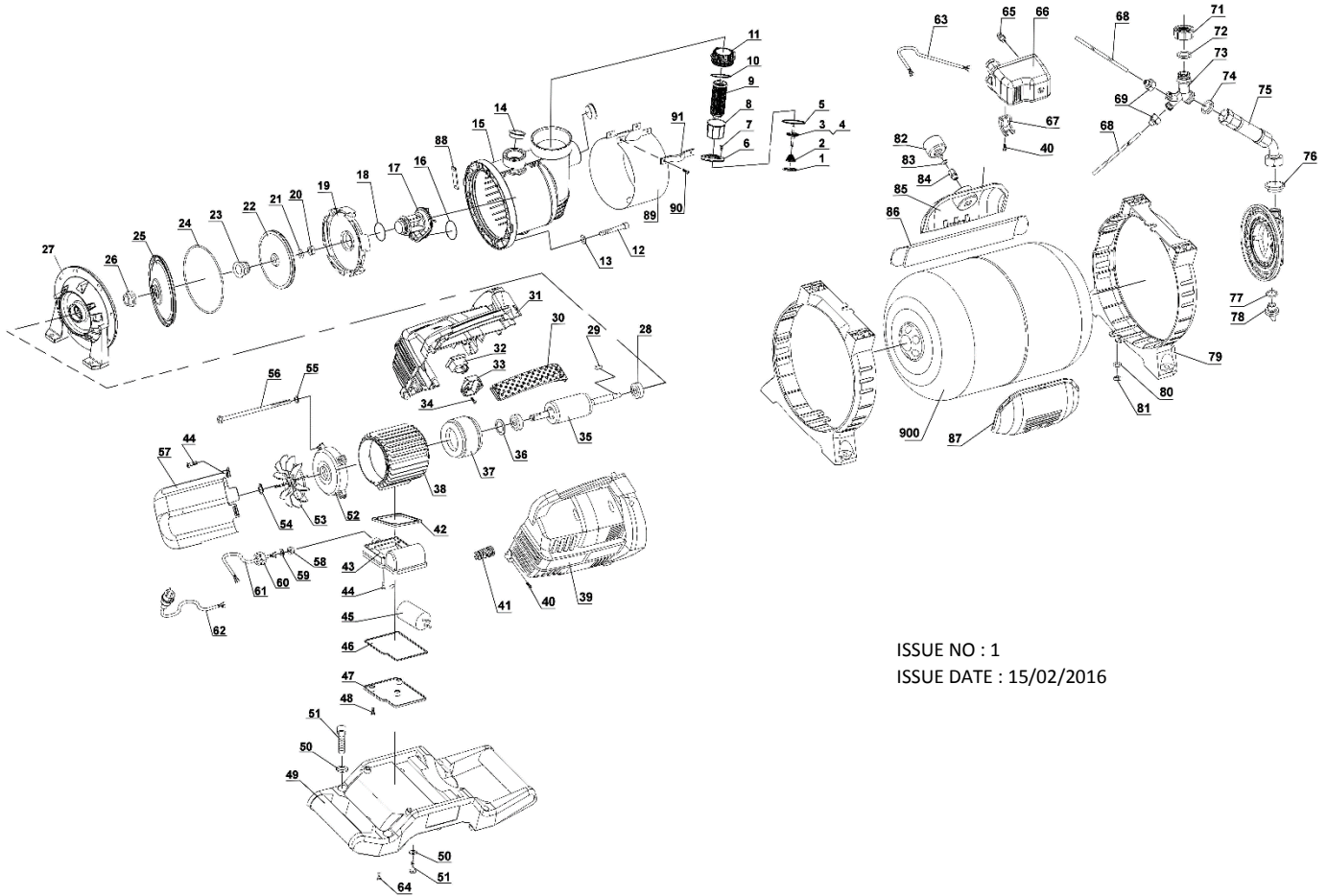




PARTS FOR :
SURFACE MOUNTING BOOSTER PUMP STAINLESS
STEEL 3300ltr/min 230V
MODELS: WPB062S.V2



ISSUE NO : 1
 ISSUE DATE : 15/02/2016

| ITEM | PART NO | DESCRIPTION | ITEM | PART NO | DESCRIPTION | ITEM | PART NO | DESCRIPTION |
|------|---------------|--------------------|------|---------------|---------------------|------|------------|----------------------------|
| 1 | WP0503009 | VALVE BODY | 31 | WP03401010 | LEFT CASING | 61 | WP01809001 | CABLE |
| 2 | WP08001023 | SPRING | 32 | WP01405007 | WATERPROOF SWITCH | 62 | WP08703004 | POWER CABLE |
| 3 | WP0504007 | VALVE CORE | 33 | WP05501041 | SWITCH PRESS BLOCK | 63 | WP01809001 | CABLE |
| 4 | WP03204059 | SEAL WASHER | 34 | WP07802020 | SCREW | 65 | WP01801007 | JOINT |
| 5 | WP05101138 | O-RING | 35 | WP02301125420 | ROTOR | 66 | WP01407011 | MECHANICAL PRESSURE SWITCH |
| 6 | WP0507004 | VALVE SEAT | 36 | WP03801001 | WAVE WASHER | 67 | WP05501038 | PRESS BLOCK |
| 7 | WP07802015201 | SCREW | 37 | WP02202088 | STATOR | 68 | WP02001021 | FLEXIBLE PIPE |
| 8 | WP01901016 | FILTER CUP | 38 | WP02405902 | ALUMINIUM CASING | 69 | WP01801006 | JOINT |
| 9 | WP01901015 | FILTER | 39 | WP03401011 | RIGHT CASING | 71 | WP06002008 | NUT |
| 10 | WP05101105 | O-RING | 40 | WP07802015 | SELF-TAPPING SCREW | 72 | WP05101086 | O-RING |
| 11 | WP07201005 | TOP COVER | 41 | WP05201052 | CABLE SHEATH | 73 | WP07503002 | FOUR-WAY CONNECTOR |
| 12 | WP070525 | SCREW (M5x25) | 42 | WP03201001 | SEAL RING | 74 | WP03204012 | SEAL WASHER |
| 13 | WP9715 | WASHER | 43 | WP04602022 | CAPACITOR BOX | 75 | WP02003066 | FLEXIBLE HOSE |
| 14 | WP04701001 | DUST COVER | 44 | WP818D | SCREW (M4x10) | 76 | WP03204002 | SEAL WASHER |
| 15 | WP03301047 | PUMP HEAD | 45 | WP08401025 | 4uF CAPACITOR | 77 | WP05101093 | O-RING |
| 16 | WP05101004 | O-RING | 46 | WP03203022 | SWITCH SEAL WASHER | 78 | WP07902001 | VALVE COVER |
| 17 | WP05003029 | DIFFUSOR | 47 | WP04601024 | CAPACITOR BOX COVER | 79 | WP04008004 | PRESSURE TANK CASING |
| 18 | WP05101004 | O-RING | 48 | WP07802009 | SCREW | 80 | WP968 | WASHER |
| 19 | WP03601019 | DIFFUSOR PLATE KIT | 49 | WP04002010 | SUPPORT | 81 | WP418 | NUT (M8) |
| 20 | WP6182 | NUT (M8) | 50 | WP9718 | WASHER | 82 | WP01601010 | PRESSURE GAUGE |
| 21 | WP9718 | WASHER | 51 | WP70815 | SCREW (M8x15) | 83 | WP97110 | WASHER |
| 22 | WP00904013 | IMPELLER | 52 | WP02602003 | REAR COVER | 84 | WP01801002 | JOINT |
| 23 | WP06102001 | MECHANICAL SEAL | 53 | WP03501001 | FAN | 85 | WP04008002 | FRONT CASING |
| 24 | WP05101031 | O-RING | 54 | WP894112 | CHECKED RING | 86 | WP04008005 | FRONT CASING SUPPORT |
| 25 | WP04902005 | SEALING PAD | 55 | WP935 | WASHER | 87 | WP04008003 | REAR CASING |
| 26 | WP05901003 | BUSHING | 56 | WP5780B | BOLT (M5x130) | 88 | WP03203010 | SEAL WASHER |
| 27 | WP02503012 | FRONT COVER | 57 | WP04801008 | MOTOR FAN COVER | 89 | WP06201023 | SHIELD |
| 28 | WP276 | BEARING B620+2Z | 58 | WP03204024 | SWITCH SEAL BLOCK | 90 | WP07802015 | SELF-TAPPING SCREW |
| 29 | WP1096475 | KEY (4x7.5) | 59 | WP03804007 | WASHER | 91 | WP05501013 | PRESS BLOCK |
| 30 | WP00101011 | HANDLE COVER | 60 | WP06002003 | CABLE PRESSING NUT | 900 | WP04006051 | PRESSURE TANK |



Sole UK Distributor,
 Sealey Group, Kempson Way,
 Suffolk Business Park,
 Bury St Edmunds, Suffolk, IP32 7AR

01284 757500
 01284 703534

www.sealey.co.uk
 sales@sealey.co.uk