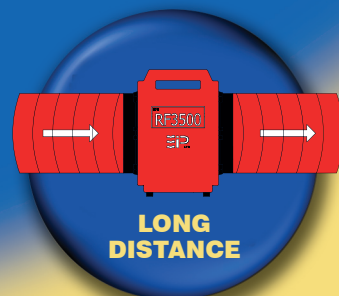
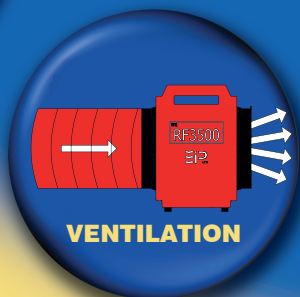
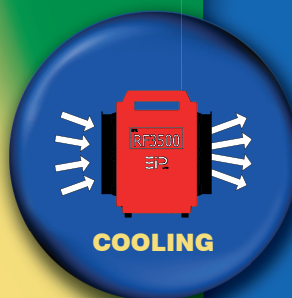




RF3500



WELDING BOOTHS • FACTORIES • FOUNDRIES
LABORATORIES • ROOF SPACES • JOINERY SHOPS
MARQUEES • VENTILATION • ENCLOSED SPACES

EIPL RF3500 POWER VENTILATOR

Welcome to the RF3500 the first heavy duty power ventilator to be designed and built specifically to the hire industry standards. With its rugged construction and unique long distance ducting capability, it's the ideal choice for the hire fleet manager.

THE VERSATILE AIR MOVEMENT SYSTEM

Whatever the application, the EIPL RF3500 has the capacity your customer needs. Wherever adverse environmental conditions pose a threat to health, safety and efficiency, the RF3500 ventilator can be used in one of three ways to improve air quality.

BUILT TO LAST

Like all EIPL hire shop equipment, the RF3500 is built to rigorous hire industry standards. It's robust, welded steel construction guarantees exceptional rapid payback and many years of revenue generating service.

COOLING

Hot and humid conditions are uncomfortable and lead to reductions in work force efficiency. By introducing a constant flow of fresh air, the RF3500 ensures that even the hottest areas become cool and comfortable.

VENTILATION

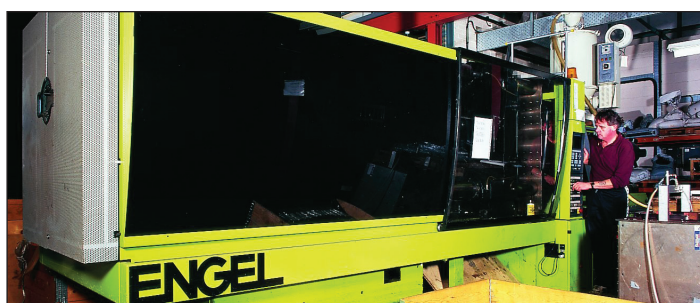
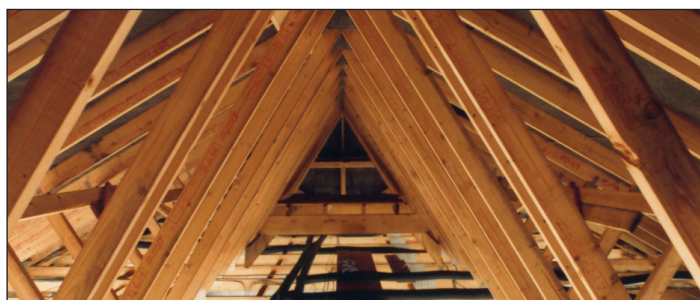
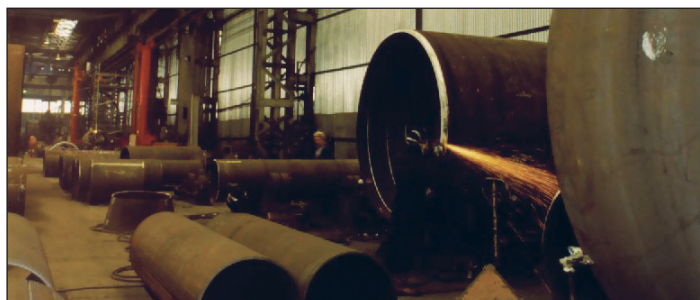
Conditions in crowded or poorly ventilated rooms are unpleasant and unhealthy. A lack of oxygen in the air causes drowsiness, making operation of machinery dangerous. An EIPL RF3500 can ensure a constant supply of fresh oxygen-rich air.

EXTRACTION

In areas where fumes, dust or unpleasant smells prevail, the build-up can be a risk to health and safety. The RF3500 has the power to extract huge amounts of contaminated air though it's heavy duty, non-collapsible flexible ducting.

TOTAL FLEXIBILITY

The PF400 is the most versatile air movement system available. It can be used as a stand alone fan for high capacity comfort cooling or in conjunction with a duct, to inject fresh air or extract contaminated air. By joining a series of ducts and fans together, the RF3500 can be used to extract or replenish air over considerable distances.



FEATURES:

Features	
On/Off Control	✓
Speeds	1
Balanced Carrying Handle	✓
Rotational Moulded Housing	✓
Finger Guards	✓
Anti Skid Feet	✓
Cable Wrap	✓
Fitted Plug	✓
Stackable	✓

APPLICATIONS:

Applications
Welding Booths
Factories
Foundries
Laboratories
Roof Spaces
Joinery Shops
Marquees
Ventilation (Pipelines etc)
Working with chemical in closed areas.

SPECIFICATIONS:

Specification	10965RB-GB	10965RD-GB
Height (mm)	419	419
Width (mm)	305	305
Depth (mm)	445	445
Weight (kg)	19	19
Voltage (V)	110	230
Power (W)	550	550
Current (A)	3	3
Supply Fuse Rating (A)	13	13
Rec, Generator Size (kva)	1	1
Airflow (m3/hr)	3500	3500
Static Pressure (mm/wg)	40	40
Blade Diameter (mm)	300	300
Duct Diameter (mm)	310	310