

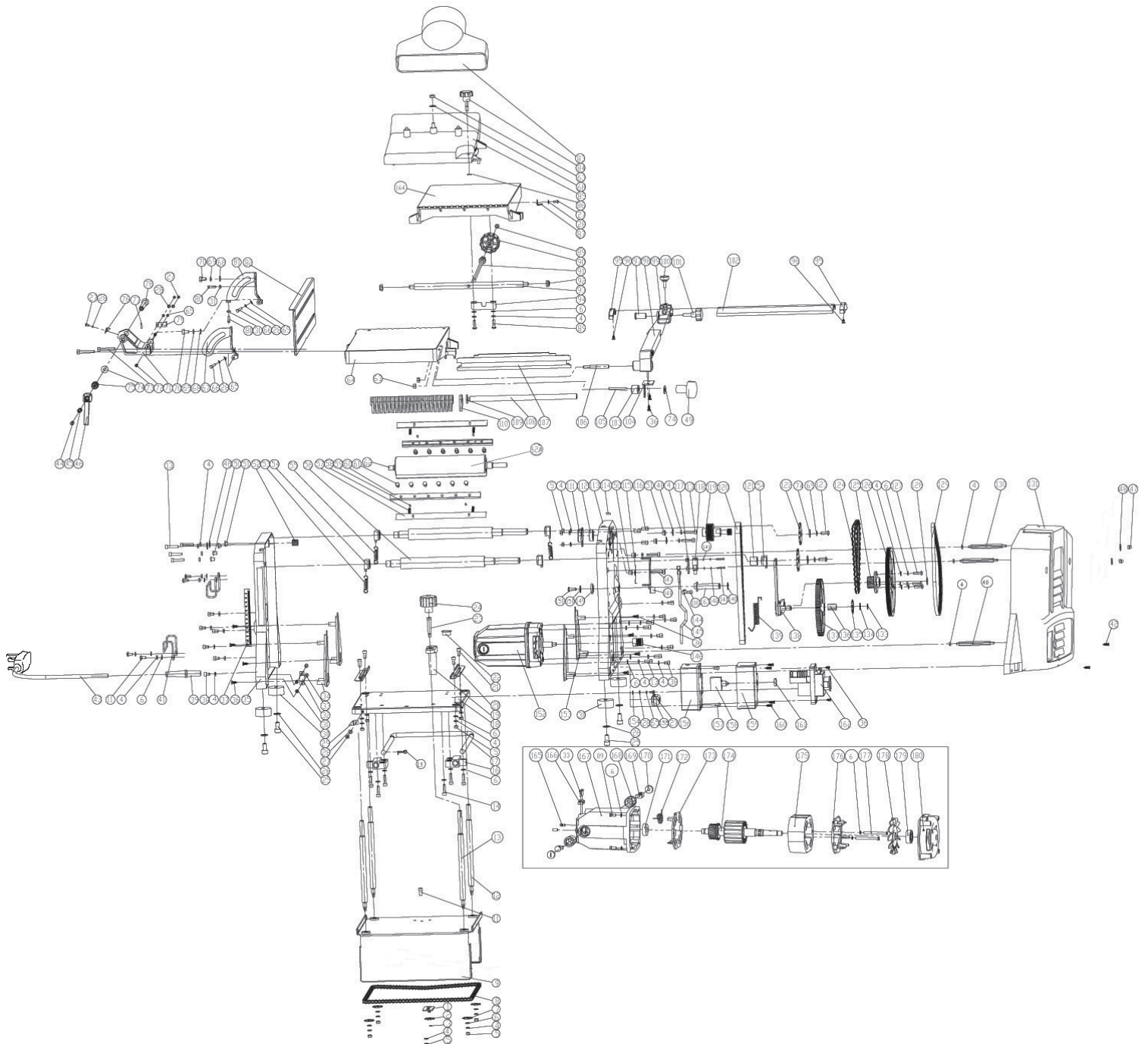


SPARE PARTS DRAWING SHEET FOR

Bench Mounted Planer/Thicknesser

Stock No.09543

Part No.BPT200



Helpline: (023) 8049 4344. Sales Desk: (023) 8049 4333. General Enquiries: (023) 8026 6355.

DRAPER TOOLS LTD, HURSLEY ROAD, CHANDLER'S FORD, EASTLEIGH, HANTS. SO53 1YF. U.K website: www.drapertools.com e-mail: sales@drapertools.com



SPARE PARTS LISTING SHEET FOR

Bench Mounted Planer/Thicknesser

Stock No.09543

Part No.BPT200

KEY No.	PART No.	STOCK No.	DESCRIPTION
1	YBPT200-01	12764	Chain tensioning rivet.
2	YBPT200-02	12765	Chain tensioner.
3	YBPT200-03	12766	Open collar.
4	YBPT200-04	12772	Spring washer.
5	YBPT200-05	12773	Nut.
6	YBPT200-06	12774	Washer.
7	YBPT200-07	12775	Adjustable chain wheel.
8	YBPT200-08	12776	Chain.
9	YBPT200-09	12777	Positioning table.
11	YBPT200-11	12778	Screw.
12	YBPT200-12	12779	Negative leading screw.
13	YBPT200-13	12782	Active leading screw.
14	YBPT200-14	12790	Screw.
15	YBPT200-15	12794	Split pin.
16	YBPT200-16	12795	Sleeve.
17	YBPT200-17	12802	Racket.
18	YBPT200-18	12814	Workbench weld component.
19	YBPT200-19	12815	Crank connect block.
20	YBPT200-20	12816	Guide plate.
21	YBPT200-21	12817	Screw.
22	YBPT200-22	12821	Crank stop.
23	YBPT200-23	12827	Crank bolt.
24	YBPT200-24	12828	Crank nip.
25	YBPT200-25	12829	Screw.
26	YBPT200-26	12830	Washer (connection plate).
27	YBPT200-27	12831	Screw.
28	YBPT200-28	12832	Washer.
29	YBPT200-29	12833	Pressing & shaving feeding pointer.
30	YBPT200-30	12834	Rubber footing.
31	YBPT200-31	12835	Nut.
32	YBPT200-32	12836	Cable clip.
33	YBPT200-33	12838	Screw.
34	YBPT200-34	12839	Footing cover plate.

KEY No.	PART No.	STOCK No.	DESCRIPTION
35	YBPT200-35	12840	Support plate.
36	YBPT200-36	12841	Screw.
37	YBPT200-37	12842	Rising/lowering scale sign.
38	YBPT200-38	12843	Screw.
39	YBPT200-39	12844	Curve preventing sheath.
40	YBPT200-40	12845	Housing.
41	YBPT200-41	12846	Wire bracket.
42	YBPT200-42	12847	Screw.
43	YBPT200-43	12848	Plug and cable.
44	YBPT200-44	12849	Screw.
45	YBPT200-45	12850	Spring.
46	YBPT200-46	12851	Locking handle.
47	YBPT200-47	12852	Nut.
48	YBPT200-48	12853	Washer.
49	YBPT200-49	12854	Coupling stud.
50	YBPT200-50	12855	Locating bush for fixed workbench.
51	YBPT200-51	12856	Locating bush for movable workbench.
52	YBPT200-52	12857	Bearing.
53	YBPT200-53	12858	Block tension spring.
54	YBPT200-54	12859	Block.
55	YBPT200-55	12860	Block tension spring.
56	YBPT200-56	12861	Roller component.
57	YBPT200-57	See Draper Stockist	Planer blade.
58	YBPT200-58	12862	Planer blade spring.
59	YBPT200-59	12863	Split pin.
60	YBPT200-60	12864	Planer blade binder plate.
61	YBPT200-61	12865	Binder plate bolt.
62	YBPT200-62	12866	Bearing.
62a	YBPT200-62a	75441	Blade drum.
63	YBPT200-63	12867	Nut.
64	YBPT200-64	12868	Fixed workbench.
65	YBPT200-65	12869	Washer.
66	YBPT200-66	12895	Screw.

Helpline: (023) 8049 4344. Sales Desk: (023) 8049 4333. General Enquiries: (023) 8026 6355.

DRAPER TOOLS LTD, HURSLEY ROAD, CHANDLER'S FORD, EASTLEIGH, HANTS. SO53 1YF. U.K website: www.drapertools.com e-mail: sales@drapertools.com



SPARE PARTS LISTING SHEET FOR

Bench Mounted Planer/Thicknesser

Stock No.09543

Part No.BPT200

KEY No.	PART No.	STOCK No.	DESCRIPTION
67	YBPT200-67	12898	Goniometer.
68	YBPT200-68	12899	Washer.
69	YBPT200-69	12900	Spring washer.
70	YBPT200-70	12902	Screw.
71	YBPT200-71	12903	Goniometer mount.
72	YBPT200-72	12904	Screw.
73	YBPT200-73	12905	Screw.
74	YBPT200-74	12908	Washer.
75	YBPT200-75	12915	Screw.
76	YBPT200-76	12918	Angle pointer.
77	YBPT200-77	12919	Spring pin.
78	YBPT200-78	12926	Locking axis.
79	YBPT200-79	12927	Angle iron.
80	YBPT200-80	12931	Screw.
81	YBPT200-81	12936	Goniometer.
82	YBPT200-82	12937	Ruling plate welding component.
83	YBPT200-83	12938	Dust exhaust hood joint.
84	YBPT200-84	12939	Hand dial.
85	YBPT200-85	12940	Dust exhaust hood.
86	YBPT200-86	12941	Open collar.
87	YBPT200-87	12942	Planing pointer.
89	YBPT200-89	12943	Screw.
90	YBPT200-90	12945	Dial.
91	YBPT200-91	12946	Adjusting bar.
92	YBPT200-92	12947	Nut.
93	YBPT200-93	12948	Lever.
94	YBPT200-94	12957	Insert block.
95	YBPT200-95	12958	Stopper.
96	YBPT200-96	12962	Screw.
97	YBPT200-97	12963	Locking bush.
98	YBPT200-98	12964	Cantilever components.
99	YBPT200-99	12965	Bridge supporting welding component.
100	YBPT200-100	12966	Locking hand dial.
101	YBPT200-101	12967	Locking hand dial.

KEY No.	PART No.	STOCK No.	DESCRIPTION
102	YBPT200-102	12968	Shield plate.
103	YBPT200-103	12972	Location limit screw.
104	YBPT200-104	12973	Locking clamping plate.
105	YBPT200-105	12974	Location limiting screw.
106	YBPT200-106	12975	Locating screw.
107	YBPT200-107	12976	Catch.
108	YBPT200-108	12978	Hanging rod.
109	YBPT200-109	12979	Gasket.
110	YBPT200-110	12980	Brake.
111	YBPT200-111	12981	Bearing cover.
112	YBPT200-112	12982	Ball bearing.
113	YBPT200-113	12983	Support plate.
114	YBPT200-114	12984	Feeding scale sign.
115	YBPT200-115	12985	Block spring.
116	YBPT200-116	12986	Screw.
117	YBPT200-117	12987	Washer.
118	YBPT200-118	12988	Micro switch.
119	YBPT200-119	12989	Arbor belt wheel.
120	YBPT200-120	12990	Belt.
121	YBPT200-121	12991	Bush.
122	YBPT200-122	12992	Big chain wheel.
123	YBPT200-123	12993	Screw.
124	YBPT200-124	12995	Driving chain.
125	YBPT200-125	12996	Pinion.
126	YBPT200-126	12997	Multi-wedge belt wheel.
127	YBPT200-127	12998	Screw.
128	YBPT200-128	12999	Axis collar.
129	YBPT200-129	13000	Multi-wedge belt.
130	YBPT200-130	13001	Coupling stud.
131	YBPT200-131	13002	Housing.
133	YBPT200-133	13003	Axis collar.
134	YBPT200-134	13004	Washer.
135	YBPT200-135	13005	Small chain wheel.
136	YBPT200-136	13006	Square bush.

Helpline: (023) 8049 4344. Sales Desk: (023) 8049 4333. General Enquiries: (023) 8026 6355.



SPARE PARTS LISTING SHEET FOR

Bench Mounted Planer/Thicknesser

Stock No.09543

Part No.BPT200

KEY No.	PART No.	STOCK No.	DESCRIPTION
137	YBPT200-137	13007	Big gear.
138	YBPT200-138	13008	Connection plate rivet.
139	YBPT200-139	13009	Connection plate tensioning spring.
140	YBPT200-140	13010	Axis collar.
141	YBPT200-141	13011	Screw.
142	YBPT200-142	13012	Washer.
143	YBPT200-143	13013	Washer.
144	YBPT200-144	13014	Cable clamp.
145	YBPT200-145	13016	Micro-switch connecting.
146	YBPT200-146	13018	Driving pulley.
147	YBPT200-147	13019	Block screw.
148	YBPT200-148	13020	Micro-switch block.
149	YBPT200-149	13021	Eccentric axis washer.
150	YBPT200-150	13023	Spring washer.
151	YBPT200-151	13024	Screw.
152	YBPT200-152	13025	Motor.
153	YBPT200-153	13026	Footing cover.
154	YBPT200-154	13027	Exterior teeth locking gasket.
155	YBPT200-155	13028	Screw.
156	YBPT200-156	13031	Switch box mount.
157	YBPT200-157	13033	Screw.
158	YBPT200-158	13034	Overload protector.

KEY No.	PART No.	STOCK No.	DESCRIPTION
159	YBPT200-159	13036	Switch box cover.
160	YBPT200-160	13043	Screw.
161	YBPT200-161	13044	Nut.
162	YBPT200-162	13045	Switch.
163	YBPT200-163	13046	Eccentric axis.
164	YBPT200-164	13050	Movable workbench.
165	YBPT200-165	13051	Screw.
166	YBPT200-166	13052	Cable clip.
167	YBPT200-167	13053	Motor shell.
168	YBPT200-168	13054	Brush housing.
169	YBPT200-169	13055	Carbon brush.
170	YBPT200-170	13057	Nut.
171	YBPT200-171	13058	Ball bearing.
172	YBPT200-172	13059	Inductance.
173	YBPT200-173	13060	Stator-end insulation.
174	YBPT200-174	13062	Armature.
175	YBPT200-175	13063	Field.
176	YBPT200-176	13078	Stator terminal insulation.
177	YBPT200-177	13086	Screw.
178	YBPT200-178	13087	Vane.
179	YBPT200-179	13088	Ball bearing.
180	YBPT200-180	13091	Motor cover.

Helpline: (023) 8049 4344. Sales Desk: (023) 8049 4333. General Enquiries: (023) 8026 6355.

DRAPER TOOLS LTD, HURSLEY ROAD, CHANDLER'S FORD, EASTLEIGH, HANTS. SO53 1YF. U.K website: www.drapertools.com e-mail: sales@drapertools.com