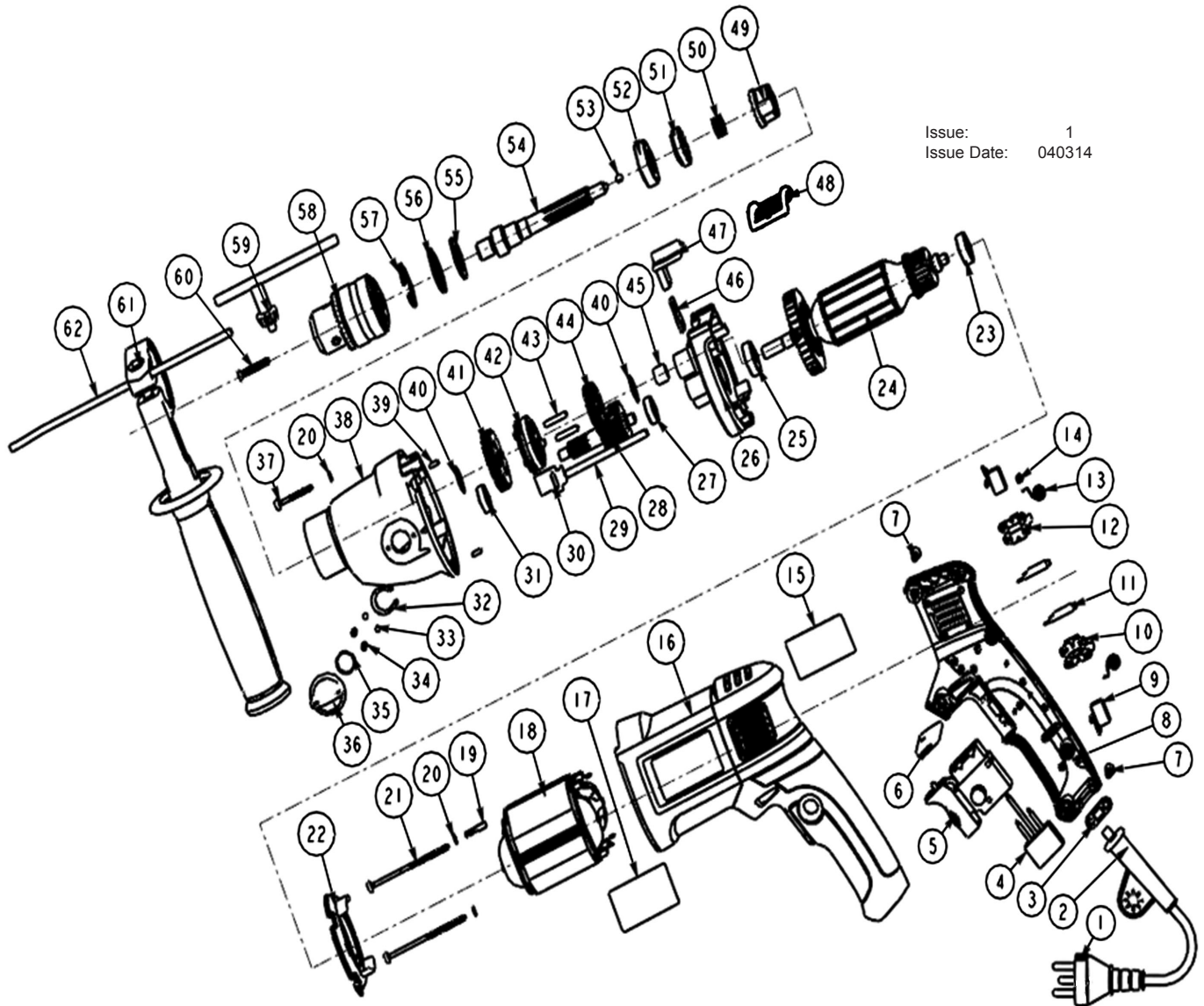




PARTS FOR:
**HAMMER DRILL 13mm 2 MECHANICAL/VARIABLE
 SPEED 1050W/230V
 MODEL: SD1000.V3**



Issue: 1
 Issue Date: 040314

ITEM	PART NO	DESCRIPTION	ITEM	PART NO	DESCRIPTION	ITEM	PART NO	DESCRIPTION
1	SD1000.V3-01	CABLE	22	SD1000.V3-22	FAN GUIDE	43	SD1000.V3-43	GUDGEON PIN
2	SD1000.V3-02	CABLE PROTECTOR	23	SD1000.V3-23	BEARING 627	44	SD1000.V3-44	QUICK GEAR
3	SD1000.V3-03	CABLE CLIP	24	SD1000.V3-24	ROTOR	45	SD1000.V3-45	BEARING HK081210
4	SD1000.V3-04	CAPACITOR	25	SD1000.V3-25	BEARING 609	46	SD1000.V3-46	SHIFTING BLOCK
5	SD1000.V3-05	SWITCH	26	SD1000.V3-26	SUPPORTER	47	SD1000.V3-47	PUSH BUTTON
6	SD1000.V3-06	SWITCH LEVER	27	SD1000.V3-27	BEARING 627	48	SD1000.V3-48	PUSH BUTTON SEAT
7	SD1000.V3-07	TAPPING SCREW ST4 X 16	28	SD1000.V3-28	MIDDLE GEAR	49	SD1000.V3-49	CALM IMPACT TOOTH
8	SD1000.V3-08	RIGHT HANDLE	29	SD1000.V3-29	PIN B5 X 70	50	SD1000.V3-50	SPRING
9	SD1000.V3-09	CARBON BRUSH	30	SD1000.V3-30	SLIDE	51	SD1000.V3-51	ACT IMPACT TOOTH
10	SD1000.V3-10	LOWER BRUSH HOLDER	31	SD1000.V3-31	BEARING 607	52	SD1000.V3-52	BEARING 6002
11	SD1000.V3-11	INDUCTOR	32	SD1000.V3-32	CIRCLIP 16mm	53	SD1000.V3-53	STEEL BALL 5mm
12	SD1000.V3-12	UPPER BRUSH HOLDER	33	SD1000.V3-33	STEEL BALL M4	54	SD1000.V3-54	OUTPUT SPINDLE
13	SD1000.V3-13	COIL SPRING	34	SD1000.V3-34	SPRING	55	SD1000.V3-55	FELT WASHER
14	SD1000.V3-14	TAPPING SCREW ST3 X 10	35	SD1000.V3-35	RUBBER RING	56	SD1000.V3-56	SEAL RING
15	SD1000.V3-15	LABEL, R/H SIDE	36	SD1000.V3-36	KNOB	57	SD1000.V3-57	CIRCLIP 32
16	SD1000.V3-16	HOUSING	37	SD1000.V3-37	TAPPING SCREW ST4 X 40	58	SD1000.V3-58	CHUCK
17	SD1000.V3-17	LABEL, L/H SIDE	38	SD1000.V3-38	GEAR BOX	59	SD1000.V3-59	CHUCK KEY
18	SD1000.V3-18	STATOR	39	SD1000.V3-39	PIN 3X8	60	SD1000.V3-60	CHUCK SCREW M5X25 (LH)
19	SD1000.V3-19	WAVEFORM BUCKLE	40	SD1000.V3-40	WASHER	61	SD1000.V3-61	SIDE HANDLE
20	SD1000.V3-20	PLAIN WASHER M4	41	SD1000.V3-41	SLOW GEAR	62	SD1000.V3-62	SCALE
21	SD1000.V3-21	TAPPING SCREW ST4 X 70	42	SD1000.V3-42	CLUTCH			

NOTE: It is our policy to continually improve products and as such we reserve the right to alter data, specifications and component parts without prior notice.

IMPORTANT: No liability is accepted for incorrect use of product.

WARRANTY: Guarantee is 12 months from purchase date, proof of which will be required for any claim.

INFORMATION: For a copy of our latest catalogue and promotions call us on 01284 757525 and leave your full name and address, including postcode.



Sole UK Distributor,
 Sealey Group, Kempson Way,
 Suffolk Business Park,
 Bury St Edmunds, Suffolk, IP32 7AR



01284 757500



01284 703534



www.sealey.co.uk



sales@sealey.co.uk