



INSTRUCTIONS FOR:

INDUSTRIAL THREE DRAWER UNIT FOR API SERIES WORKBENCHES

MODEL NO: **API16**

Thank you for purchasing a Sealey product. Manufactured to a high standard, this product will, if used according to these instructions, and properly maintained, give you years of trouble free performance.

IMPORTANT: PLEASE READ THESE INSTRUCTIONS CAREFULLY. NOTE THE SAFE OPERATIONAL REQUIREMENTS, WARNINGS & CAUTIONS. USE THE PRODUCT CORRECTLY AND WITH CARE FOR THE PURPOSE FOR WHICH IT IS INTENDED. FAILURE TO DO SO MAY CAUSE DAMAGE AND/OR PERSONAL INJURY AND WILL INVALIDATE THE WARRANTY. KEEP THESE INSTRUCTIONS SAFE FOR FUTURE USE.

1. SAFETY

1.1 GENERAL SAFETY

- ❑ **WARNING!** Ensure Health & Safety, local authority, and general workshop practice regulations are adhered to when using workbenches and associated workbench drawers.
 - ❑ **WARNING!** Use the workbench on level and solid ground, preferably concrete. Avoid tarmacadam since the workbench may sink into the surface.
 - ✓ Locate the workbench in a suitable working area.
 - ✓ Keep the work area clean, uncluttered and ensure there is adequate lighting.
 - ✓ Keep the workbench clean and tidy in accordance with good workshop practice.
 - ✓ Keep children and unauthorised persons away from the working area.
 - ✓ Use the supplied rubber caps on all exposed self tapping screw projections.
 - x **DO NOT** remove a fully loaded drawer.
 - x **DO NOT** use the workbench drawers for any purpose other than that for which they are designed.
 - x **DO NOT** use the workbench drawers out of doors.
 - x **DO NOT** get the workbench drawers wet or use in damp or wet locations or areas where there is condensation.
 - x **DO NOT** clean the workbench drawers with any solvents which may damage the painted surfaces.
- Note!** The assembly of this product to the workbench will require assistance.

2. INTRODUCTION

Industrial quality slim-width triple drawer unit for our API Series of Industrial Workbenches, to give the option of more under bench access. All drawers run on heavy-duty ball bearing drawer slides with a load bearing of 100kg and are fitted with a safety locking catch to prevent inadvertent opening. Each drawer is fitted with dividers running back to front and then supplied with cross dividers for personalised storage layout. Fitted with two high quality locks and supplied with two coded keys.

3. SPECIFICATION

Model No:..... **API16**
 Compatibility:..... API1500, API1800, API2100
 Overall Size:..... 407 x 580 x 450mm
 *Internal Drawer Size [x2] (WxDxH):..... 300 x 450 x 70mm
 *Internal Drawer Size [x1] (WxDxH):..... 300 x 450 x 115mm
 Maximum Drawer Capacity:..... 100kg (evenly spread)
 *3 Drawer Units

4. CONTENTS

Item	Description	QTY
1	Enclosure c/w Ball Bearing Tracks	1
2	Drawer ["H"]=70] c/w Runner Tracks	2
2A	Drawer ["H"]=115]	1
3	Central Mullion Partition [Drawer "H"]=70]	2
3A	Central Mullion Partition [Drawer "H"]=115]	1
4	Transom Partition Plate [Drawer "H"]=70]	8
4A	Transom Partition Plate [Drawer "H"]= 115]	4
5	Self Tapping Screw	24
6	Safety Cap	24
7	Bridge Channel (c/w captive nuts)	2
8	Hex Head Screw M8 x 20 c/w spring & plain washers	4 sets
9	Drawer Key (record the key code)	2

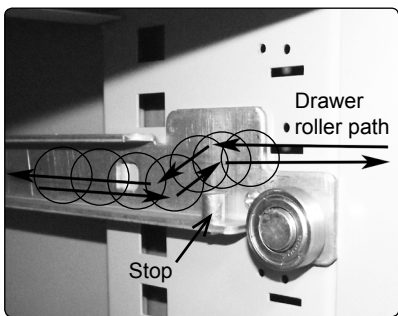
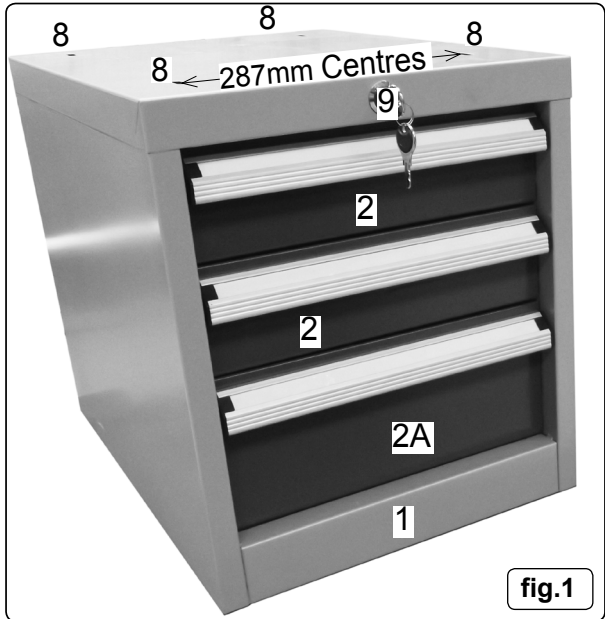


fig.2

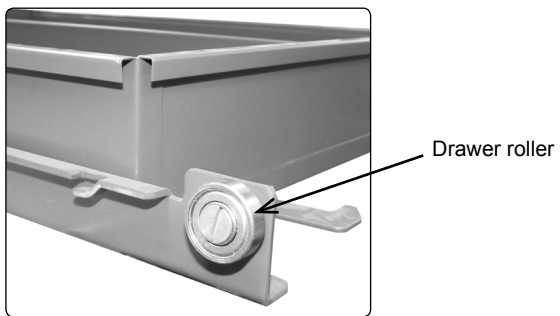


fig.3

5. ASSEMBLY

5.1. Drawer removal from enclosure

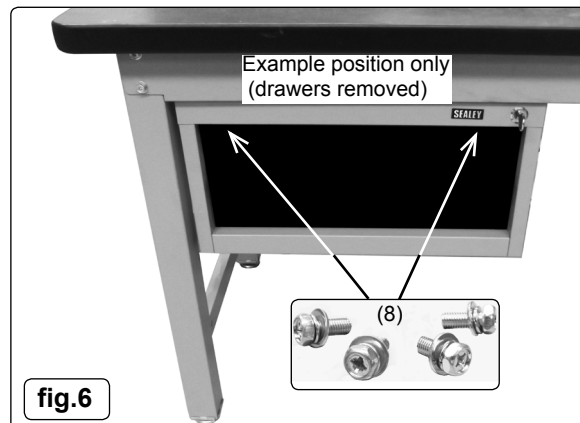
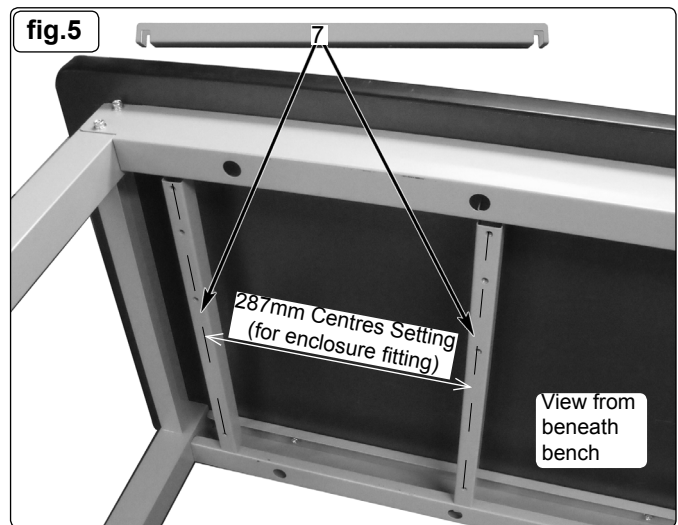
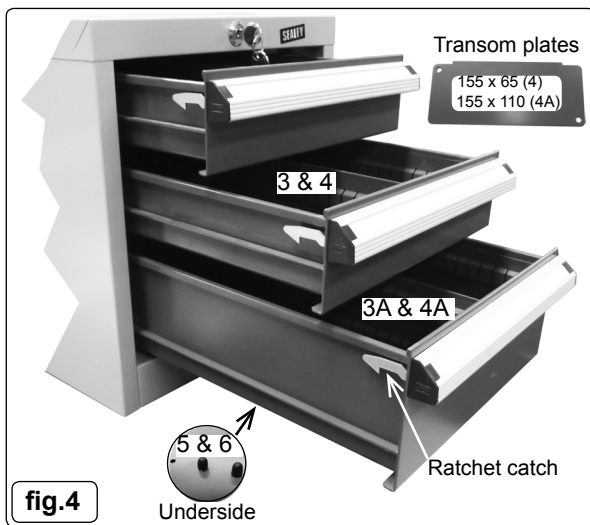
- 5.1.1. Unlock the drawer if required and open the drawer fully and squarely until it stops (fig.2 & 4). The ratchet catch, which safely holds the drawers shut, releases when the drawer handle is gripped. Remove the loose components, items 3,4,5 and 6.
- 5.1.2. With the drawer fully open against the stop, place one hand beneath the drawer and the other on the handle.
- 5.1.3. Lift the drawer and withdraw. See fig.2 for drawer roller path and fig.3 for the drawer roller.

5.2. Fitting the enclosure to the bench

- 5.2.1. Locate the two bridge channels from beneath the bench at the required centres (fig.1) and (fig.5). As a suggestion only; position the bridge channels centrally about the bench width for best access.
- 5.2.2. Offer the empty drawer enclosure up to the bridge channels aligning slots to the captive nut holes in the bridge channels.
- 5.2.3. A second person is required to screw the enclosure to the bridge channels. **DO NOT** tighten at this stage.
- 5.2.4. With all four screws fitted (item 8), with at least three threads engaged on each nut; slide the enclosure to the required position (fig.6) and tighten all screws.

5.3. Drawer Mullion Partition

- 5.3.1. Fit (item 3 and 3A) centrally with self tapping screws (item 5) through the pre-punched holes. Transom plates (item 4) partitioning as required.
- 5.3.2. Fit the rubber safety caps (item 6) to all self tapping screw projections, from the underside of the drawer (fig.4).
- 5.3.3. Locate the drawer rollers (fig.3) with the enclosure runners (fig.2) and slide the drawer/drawers fully back into the enclosure. Generally the reverse of removal. **DO NOT** force at any stage.



6. MAINTENANCE

- 6.1. Lubricate the drawer runner bearings and track with a general purpose grease every 6 months. Wipe off excess with a dry cloth.



Environmental Protection

Recycle unwanted materials instead of disposing of them as waste. All tools, accessories and packaging should be sorted, taken to a recycling centre and disposed of in a manner which is compatible with the environment. When the product becomes completely unserviceable and requires disposal, dispose of the product according to local regulations.

Parts support is available for this product. To obtain a parts listing and/or diagram, please log on to www.sealey.co.uk, email sales@sealey.co.uk or telephone 01284 757500.

NOTE: It is our policy to continually improve products and as such we reserve the right to alter data, specifications and component parts without prior notice.

IMPORTANT: No liability is accepted for incorrect use of this product.

WARRANTY: Guarantee is 12 months from purchase date, proof of which will be required for any claim.

INFORMATION: For a copy of our latest catalogue and promotions call us on 01284 757525 and leave your full name and address, including postcode.



Sole UK Distributor, Sealey Group,
Kempson Way, Suffolk Business Park,
Bury St. Edmunds, Suffolk,
IP32 7AR

01284 757500

01284 703534



www.sealey.co.uk



sales@sealey.co.uk