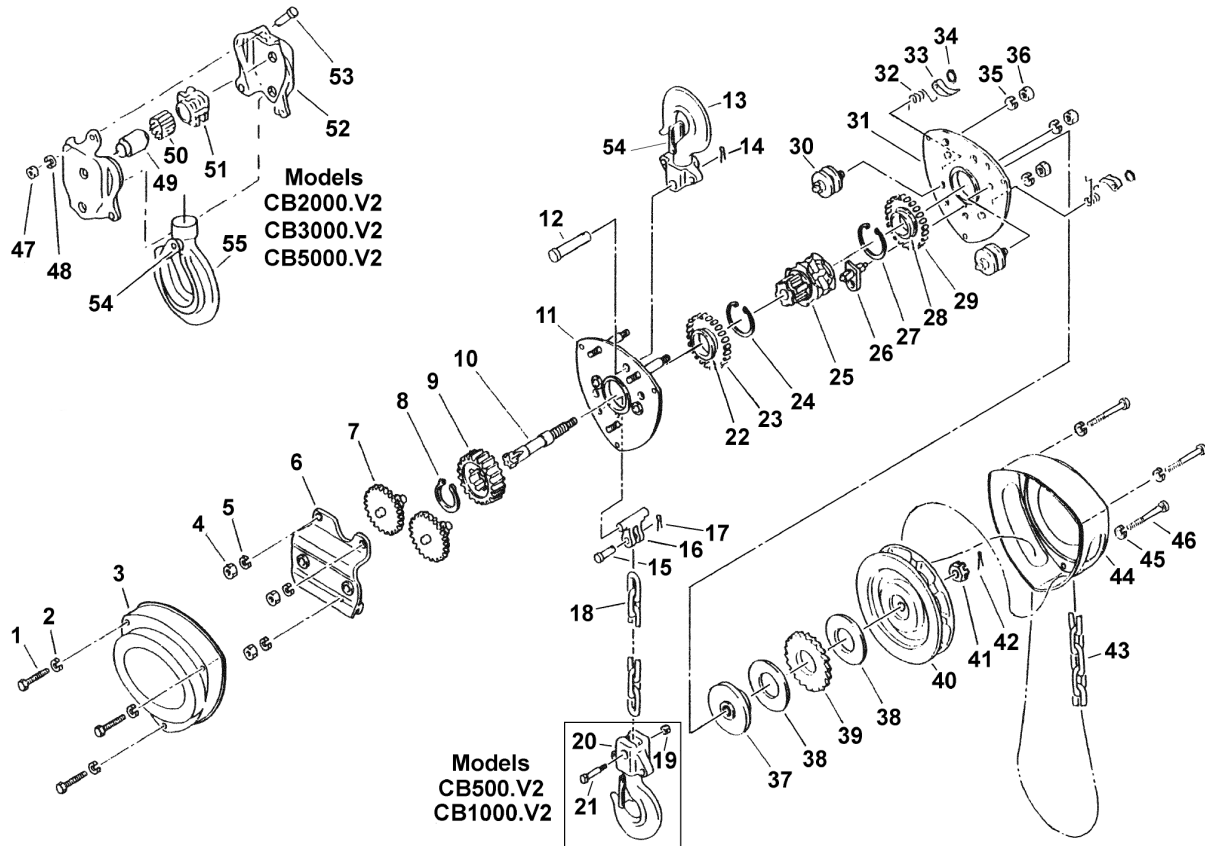


Models: **CB500.V2, CB1000.V2, CB2000.V2, CB3000.V2, CB5000.V2**



Issue: 2
Date Issued: 05/03/2008

Item	Part No.	Description	Item	Part No.	Description	Item	Part No.	Description
1	Model01	Screw	20	Model20	Top Hook Block	39	Model39	Ratchet Disk
2	Model02	Nut	21	Model21	Chain Pin	40	Model40	Hand Wheel
3	Model03	Cover	22	Model22	Bearing Inner Race	41	Model41	Nut
4	Model04	Nut	23	Model23	Bearing Outer Race	42	Model42	Split Pin
5	Model05	Ring	24	Model24	Snap Ring	43	Model43	Hand Chain
6	Model06	Gear Cover	25	Model25	Chain Sprocket	44	Model44	Hand Wheel Cover
7	Model07	Disk Gear	26	Model26	Stripper	45	Model45	Nut
8	Model08	Snap Ring	27	Model27	Snap Ring	46	Model46	Screw
9	Model09	Splined Gear	28	Model28	Bearing Inner Race	47	Model47	Nut
10	Model10	Driving Shaft	29	Model29	Bearing Outer Race	48	Model48	Ring
11	Model11	Side Plate B	30	Model30	Guide Roller	49	Model49	Shaft
12	Model12	Top Pin	31	Model31	Side Plate B	50	Model50	Roller
13	Model13	Hook	32	Model32	Pawl Spring	51	Model51	Chain Wheel
14	Model14	Split Pin	33	Model33	Pawl	52	Model52	Bottom Hook Block
15	Model15	Tailgate Pin	34	Model34	Pawl Pin	53	Model53	Screw
16	Model16	Tailgate	35	Model35	Ring	54	Model54	Latch Kit
17	Model17	Split Pin	36	Model36	Nut	55	Model55	Hook
18	Model18	Load Chain	37	Model37	Brake Seat			
19	Model19	Nut	38	Model38	Friction Plate			

Example: The part number for item 23 in a CB3000.V2 Chain Block is .CB3000.V2.23.