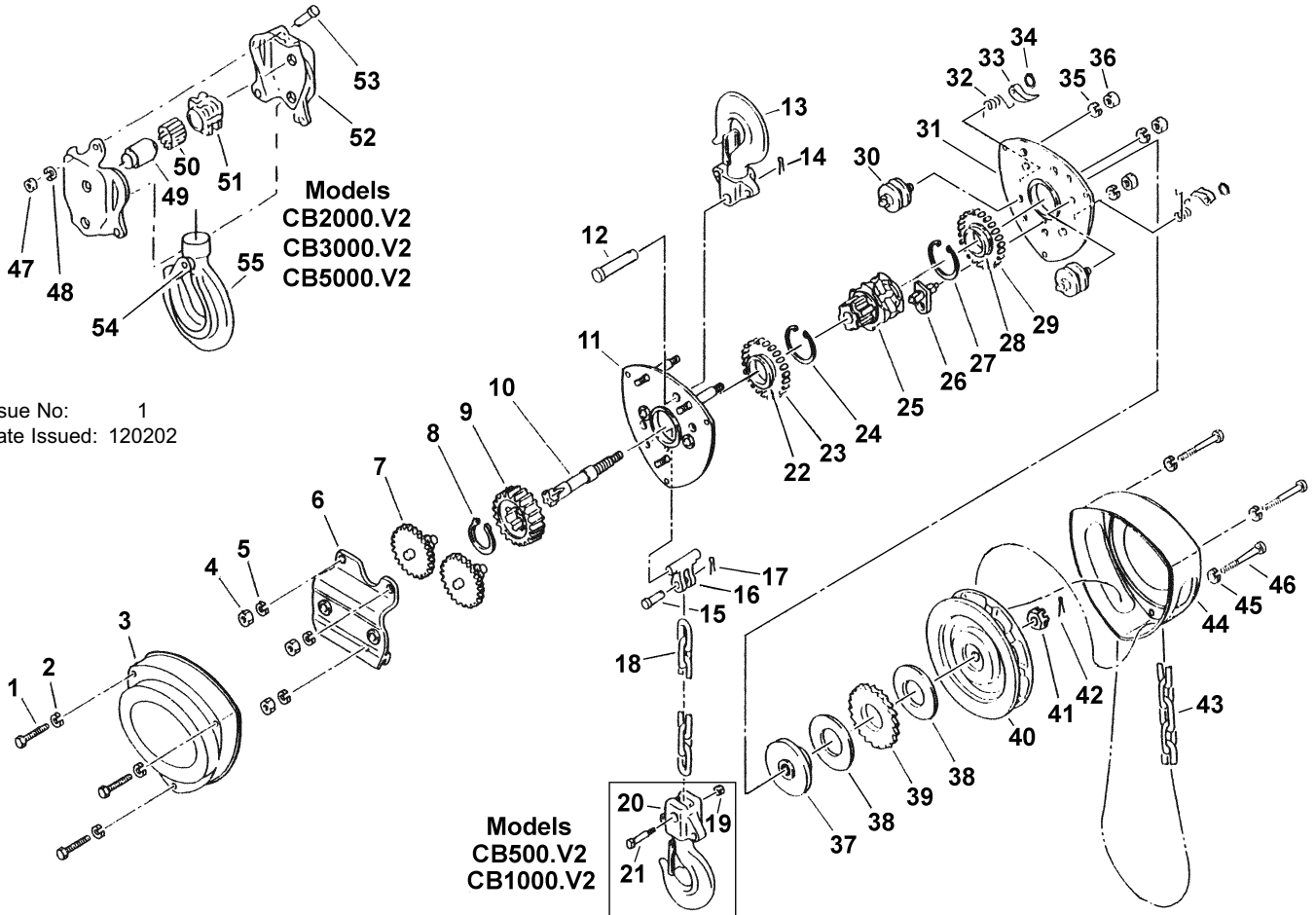


Models: **CB500.V2, CB1000.V2, CB2000.V2, CB3000.V2, CB5000.V2**



Issue No: 1
Date Issued: 120202

Item	Part No.	Description	Item	Part No.	Description	Item	Part No.	Description
1	'Model'.01	Screw	20	'Model'.20	Top Hook Block	39	'Model'.39	Ratchet Disk
2	'Model'.02	Nut	21	'Model'.21	Chain Pin	40	'Model'.40	Hand Wheel
3	'Model'.03	Cover	22	'Model'.22	Bearing Inner Race	41	'Model'.41	Nut
4	'Model'.04	Nut	23	'Model'.23	Bearing Outer Race	42	'Model'.42	Split Pin
5	'Model'.05	Ring	24	'Model'.24	Snap Ring	43	'Model'.43	Hand Chain
6	'Model'.06	Gear Cover	25	'Model'.25	Chain Sprocket	44	'Model'.44	Hand Wheel Cover
7	'Model'.07	Disk Gear	26	'Model'.26	Stripper	45	'Model'.45	Nut
8	'Model'.08	Snap Ring	27	'Model'.27	Snap Ring	46	'Model'.46	Screw
9	'Model'.09	Splined Gear	28	'Model'.28	Bearing Inner Race	47	'Model'.47	Nut
10	'Model'.10	Driving Shaft	29	'Model'.29	Bearing Outer Race	48	'Model'.48	Ring
11	'Model'.11	Side Plate B	30	'Model'.30	Guide Roller	49	'Model'.49	Shaft
12	'Model'.12	Top Pin	31	'Model'.31	Side Plate B	50	'Model'.50	Roller
13	'Model'.13	Hook	32	'Model'.32	Pawl Spring	51	'Model'.51	Chain Wheel
14	'Model'.14	Split Pin	33	'Model'.33	Pawl	52	'Model'.52	Bottom Hook Block
15	'Model'.15	Tailgate Pin	34	'Model'.34	Pawl Pin	53	'Model'.53	Screw
16	'Model'.16	Tailgate	35	'Model'.35	Ring	54	'Model'.54	Latch Kit
17	'Model'.17	Split Pin	36	'Model'.36	Nut	55	'Model'.55	Hook
18	'Model'.18	Load Chain	37	'Model'.37	Brake Seat			
19	'Model'.19	Nut	38	'Model'.38	Friction Plate			

Example: The part number for item 23 in a CB3000.V2 Chain Block is 'CB3000.V2.23'