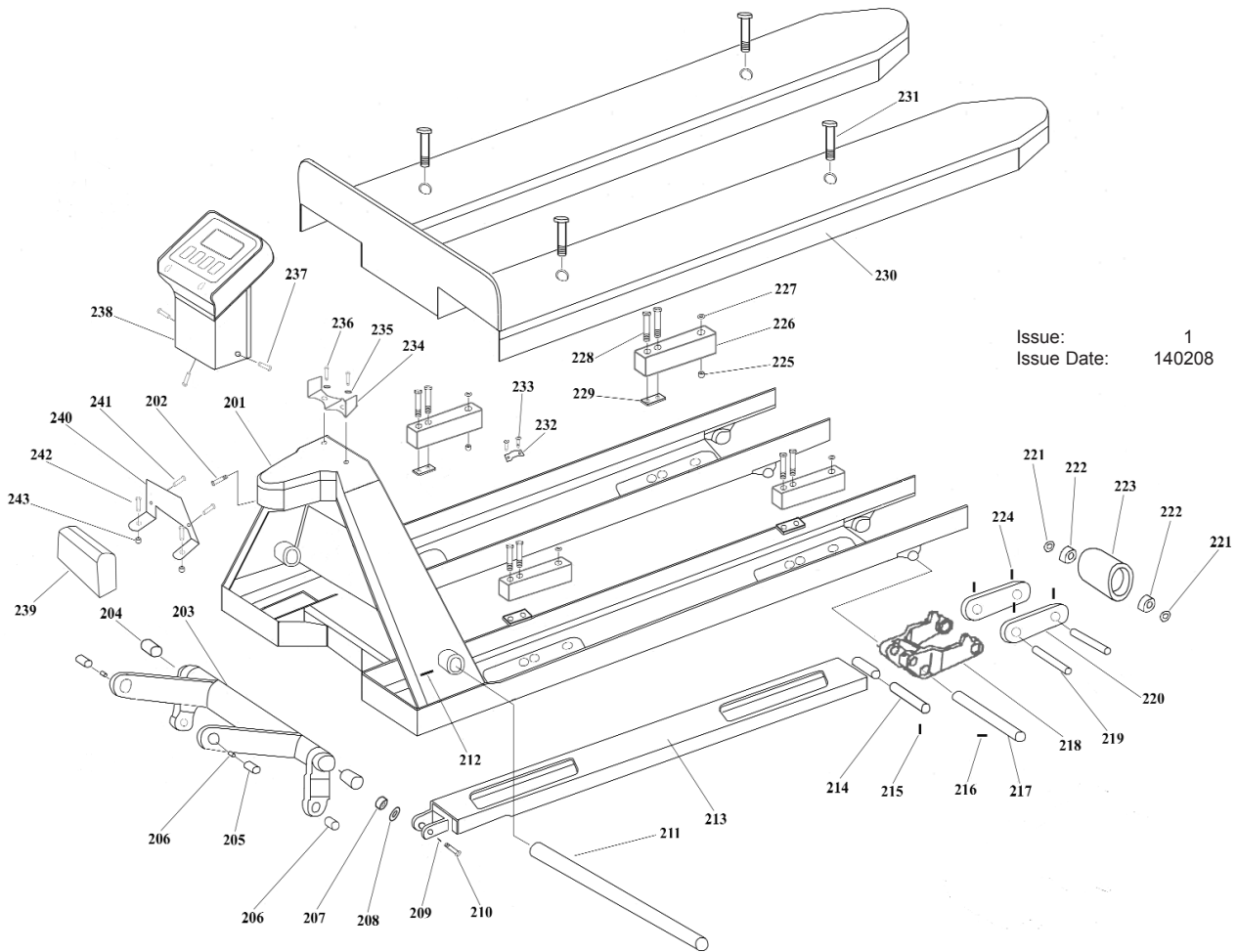


FRAME ASS'Y



Issue: 1
 Issue Date: 140208

ITEM	PART NO	DESCRIPTION	ITEM	PART NO	DESCRIPTION
201	PT1150SC2.201	CHASSIS	223	PT1150SC2.223	LOAD ROLLER
202	PT1150SC2.202	BOLT	224	PT1150SC2.224	ELASTIC PIN
203	PT1150SC2.203	ROCK-ARM	225	PT1150SC2.225	NUT
204	PT1150SC2.204	BUSHING	226	PT1150SC2.226	LOAD CELL
205	PT1150SC2.205	SHAFT	227	PT1150SC2.227	WASHER
206	PT1150SC2.206	BUSHING	228	PT1150SC2.228	BOLT
207	PT1150SC2.207	NUT	229	PT1150SC2.229	LOAD CELL MOUNTING PLATE
208	PT1150SC2.208	WASHER	230	PT1150SC2.230	FORK SHOE
209	PT1150SC2.209	SPLIT PIN	231	PT1150SC2.231	FORK SHOE BOLT
210	PT1150SC2.210	BOLT	232	PT1150SC2.232	CLAMP FOR CABLE
211	PT1150SC2.211	LONG SHAFT	233	PT1150SC2.233	SCREW
212	PT1150SC2.212	ELASTIC PIN	234	PT1150SC2.234	INDICATOR SUPPORT BRACKET
213	PT1150SC2.213	PUSHING ROD	235	PT1150SC2.235	BOLT RING
214	PT1150SC2.214	SHAFT	236	PT1150SC2.236	BOLT
215	PT1150SC2.215	ELEASTIC PIN	237	PT1150SC2.237	BOLT
216	PT1150SC2.216	ELASTIC PIN	238	PT1150SC2.238	DISPLAY UNIT
217	PT1150SC2.217	SHAFT	239	PT1150SC2.239	JUNCTION BOX
218	PT1150SC2.218	FRAME OF ROLLER	240	PT1150SC2.240	JUNCTION BOX MOUNTING BRACKET
219	PT1150SC2.219	AXLE FOR ROLLER	241	PT1150SC2.241	SCREW
220	PT1150SC2.220	LINKING PLATE	242	PT1150SC2.242	BOLT
221	PT1150SC2.221	WASHER	243	PT1150SC2.243	NUT
222	PT1150SC2.222	BEARING			

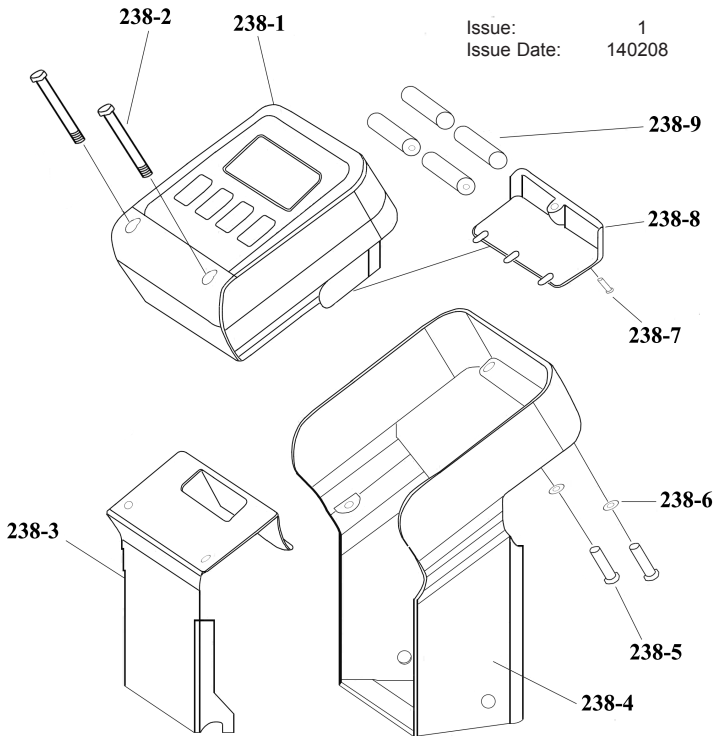
NOTE: It is our policy to continually improve products and as such we reserve the right to alter data, specifications and component parts without prior notice.

IMPORTANT: No liability is accepted for incorrect use of product.

WARRANTY: Guarantee is 12 months from purchase date, proof of which will be required for any claim.

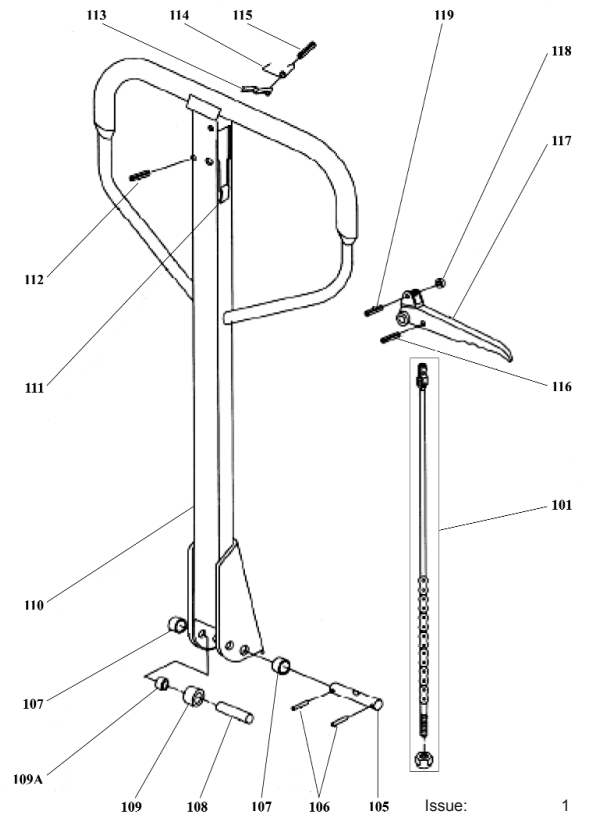
INFORMATION: For a copy of our latest catalogue and promotions call us on 01284 757525 and leave your full name and address, including postcode.

DISPLAY UNIT



Issue: 1
 Issue Date: 140208

HANDLE ASS'Y



Issue: 1
 Issue Date: 140208

ITEM	PART NO	DESCRIPTION
238-1	PT1150SC.238A	INDICATOR
238-2	PT1150SC.238B	BOLT
238-3	PT1150SC.238C	INDICATOR COMPLETE
238-4	PT1150SC.238D	INDICATOR SUPPORT
238-5	PT1150SC.238E	BOLT
238-6	PT1150SC.238F	WASHER
238-7	PT1150SC.238G	BOLT
238-8	PT1150SC.238H	BATTERY COVER
238-9	PT1150SC.238I	BATTERIES

ITEM	PART NO	DESCRIPTION
101	PT1150SC2.101	RELEASE ROD
105	PT1150SC2.105	AXLE WITH HOLE
106	PT1150SC2.106	ELASTIC PIN
107	PT1150SC2.107	BUSHING
108	PT1150SC2.108	ROLLER PIN
109	PT1150SC2.109	PRESSURE ROLLER
109A	PT1150SC.109A	BUSHING
110	PT1150SC2.110	DRAW-BAR
111	PT1150SC2.111	STOP RUBBER
112	PT1150SC2.112	ELASTIC PIN
113	PT1150SC2.113	BLADE SPRING
114	PT1150SC2.114	SPRING
115	PT1150SC2.115	ELASTIC PIN
116	PT1150SC2.116	ELASTIC PIN
117	PT1150SC2.117	CONTROL HANDLE
118	PT1150SC2.118	ROLLER
119	PT1150SC2.119	ELASTIC PIN

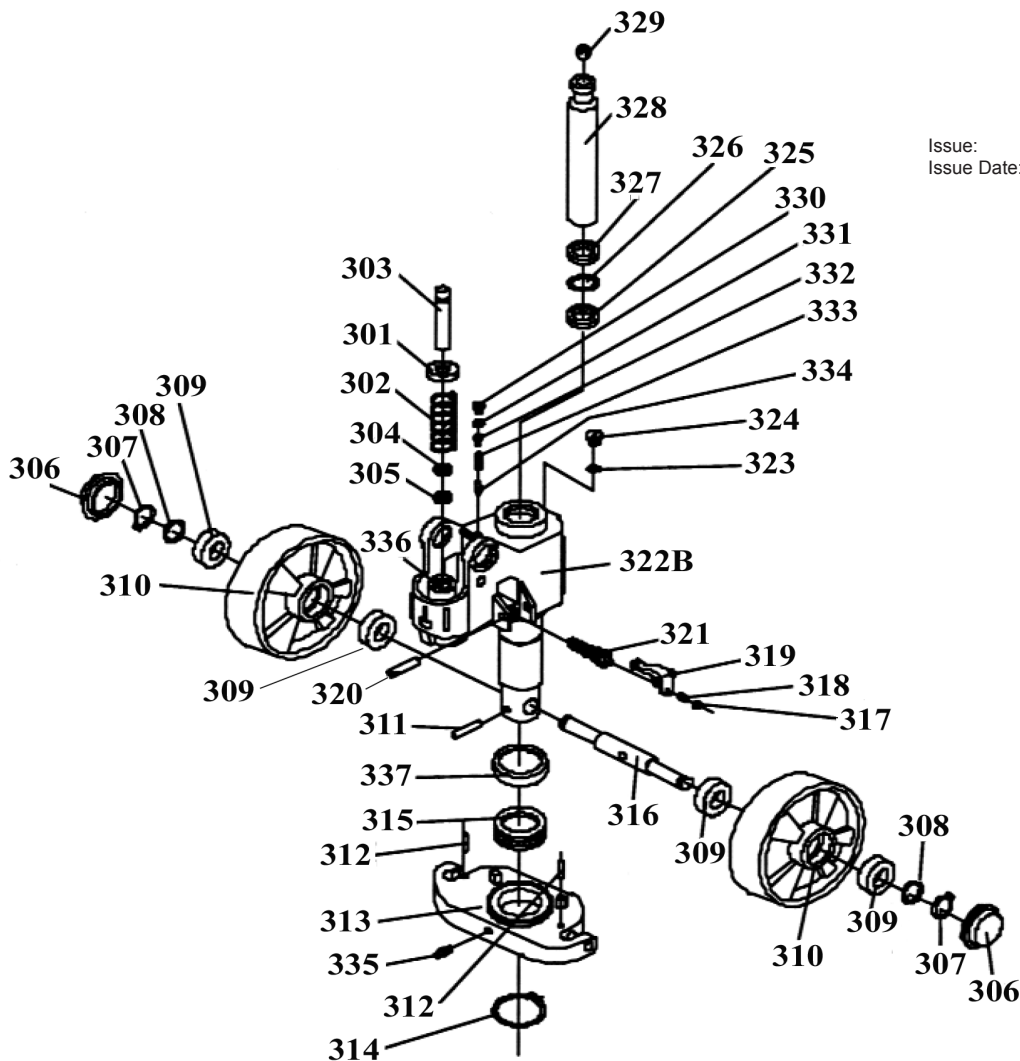
NOTE: It is our policy to continually improve products and as such we reserve the right to alter data, specifications and component parts without prior notice.

IMPORTANT: No liability is accepted for incorrect use of product.

WARRANTY: Guarantee is 12 months from purchase date, proof of which will be required for any claim.

INFORMATION: For a copy of our latest catalogue and promotions call us on 01284 757525 and leave your full name and address, including postcode.

HYDRAULIC PUMP



Issue: 1
 Issue Date: 140208

ITEM	PART NO	DESCRIPTION	ITEM	PART NO	DESCRIPTION
301	PT1150SC2.301	SPRING CAP	320	PT1150SC2.320	ELASTIC PIN
302	PT1150SC2.302	SPRING	321	PT1150SC2.321	VALVE CARTRIDGE
303	PT1150SC2.303	PUMP PISTON	322	PT1150SC2.322	PUMP BODY
304	PT1150SC2.304	DUST RING	323	PT1150SC2.323	SEAL WASHER
305	PT1150SC2.305	SEAL	324	PT1150SC2.324	SCREW PLUG
306	PT1150SC2.306	DUST COVER	325	PT1150SC2.325	SEAL
307	PT1150SC2.307	LOCK RING	326	PT1150SC2.326	O-RING
308	PT1150SC2.308	WASHER	327	PT1150SC2.327	DUST RING
309	PT1150SC2.309	BEARING	328	PT1150SC2.328	PISTON ROD
310	PT1150SC2.310	LOADING WHEEL	329	PT1150SC2.329	STEEL BALL
311	PT1150SC2.311	ELASTIC PIN	330	PT1150SC2.330	SCREW PLUG
312	PT1150SC2.312	ELASTIC PIN	331	PT1150SC2.331	O-RING
313	PT1150SC2.313	THRUST PLATE	332	PT1150SC2.332	BOLT
314	PT1150SC2.314	RETAINING RING	333	PT1150SC2.333	SPRING
315	PT1150SC2.315	BEARING	334	PT1150SC2.334	SPINDLE OF SAFETY VALVE
316	PT1150SC2.316	SHAFT OF LOADING WHEEL	335	PT1150SC2.335	GREASE CUP
317	PT1150SC2.317	NUT	336	PT1150SC2.336	CYLINDER
318	PT1150SC2.318	SCREW	337	PT1150SC2.337	COVER OF BEARING
319	PT1150SC2.319	LEVEL PLATE			

NOTE: It is our policy to continually improve products and as such we reserve the right to alter data, specifications and component parts without prior notice.

IMPORTANT: No liability is accepted for incorrect use of product.

WARRANTY: Guarantee is 12 months from purchase date, proof of which will be required for any claim.

INFORMATION: For a copy of our latest catalogue and promotions call us on 01284 757525 and leave your full name and address, including postcode.