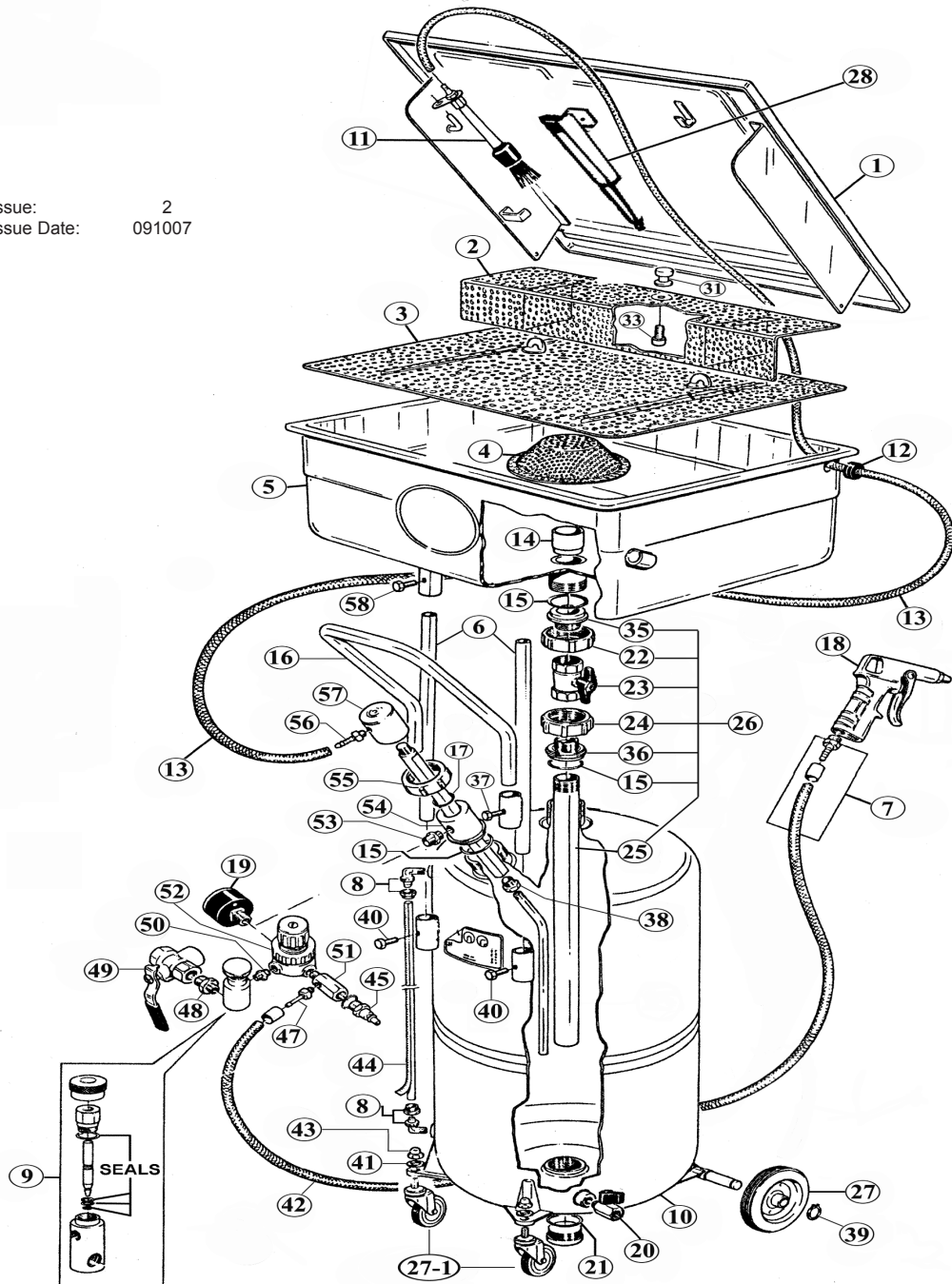


Issue: 2
 Issue Date: 091007



ITEM	PART NO	DESCRIPTION	ITEM	PART NO	DESCRIPTION	ITEM	PART NO	DESCRIPTION
1	SM224.01	LID	20	SM224.20	DRAIN COCK	40	SM224.40	SCREW
2	SM224.02	BENT FILTER GRID	21	SM224.21	SEAL (DRAIN PLUG)	41	SM224.41	WASHER
3	SM224.03	FLAT FILTER GRID	22	SM224.22	VALVE NUT (FOR TOP TANK)	42	SM224.42	HOSE
4	SM224.04	CIRCULAR FILTER	23	SM224.23	VALVE	43	SM224.43	DOMED NUT
5	SM224.05	UPPER TANK	24	SM224.24	VALVE NUT (FOR BOTTOM TANK)	44	SM224.44	LEVEL TUBE
6	SM224.06	UPPER TANK SUPPORTS	25	SM224.25	TANK TUBE	45	SM224.45	AIR COUPLING
7	SM224.07	GUN CONNECTOR KIT	26	SM224.V	VALVE COMPLETE (c/w TANK TUBE)	47	SM224.47	HOSE CONNECTOR
8	SM224.08	LEVEL IND CONNECTOR	27	SM224.W	FIXED WHEEL	48	SM224.48	UNION
9	SM224.09	SEAL KIT (FLOW REGULATOR)	27-1	SM224.27-1	CASTOR WHEEL	49	SM224.49	VALVE
10	SM224.10	LOWER RESERVOIR	28	SM224.26	SAFETY LEVER	50	SM224.50	CONNECTOR
11	SM224.11	BRUSH	31	SM224.31	SCREW	51	SM224.51	UNION
12	SM224.12	GROMMET	33	SM224.33	SCREW	52	SM224.52	REGULATOR
13	SM224.13	BRUSH FEED HOSE	34	SM224.34	SHROUD	53	SM224.53	UNION
14	SM224.14	COLLAR	35	SM224.35	SEAL	54	SM224.54	BRASS FITTING
15	SM224.15	SEAL	36	SM224.36	SEAL	55	SM224.55	RING NUT
16	SM224.16	HANDLE	37	SM224.37	SCREW	56	SM224.56	HOSE CONNECTOR
17	SM224.17	SEAL (SAFETY VALVE)	38	SM224.38	UNION	57	SM224.57	HOSE CONNECTOR BLOCK
18	SM224.18	GUN COMPLETE	39	SM224.39	RETAINING RING	58	SM224.58	SCREW
19	SM224.19	PRESSURE GAUGE						

NOTE: It is our policy to continually improve products and as such we reserve the right to alter data, specifications and component parts without prior notice.
IMPORTANT: No liability is accepted for incorrect use of product.
WARRANTY: Guarantee is 12 months from purchase date, proof of which will be required for any claim.
INFORMATION: For a copy of our latest catalogue and promotions call us on 01284 757525 and leave your full name and address, including postcode.